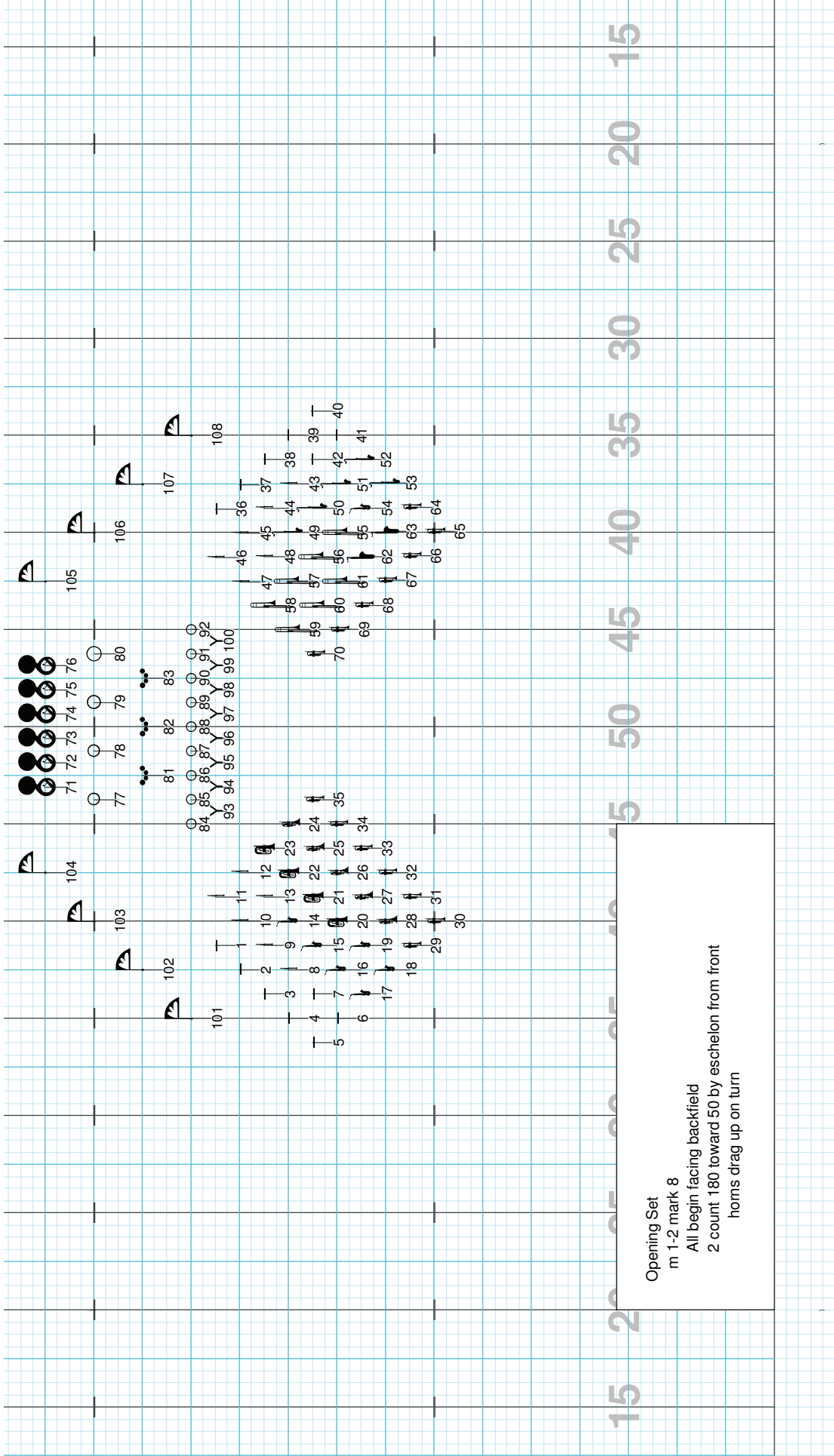


Drill: Lapeer East 2010-1 Magical Mystery Tour.3dj

Set #1 Count: 0



Director Viewpoint

Director Viewpoint

Drill: Lapeer East 2010-1 Magical Mystery Tour.3dj

Set #3 Count: 40

m 7-10 move 16

m 11-13 hold 12, foot out on 1, in on 6, 4 count 360 to center on 7-9



101



102



103



104



105



106



107



108



71 72 73 74 75 76



77 78 79 80



81 82 83

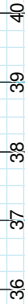


84 85 86 87 88 89 90 91 92



93 94 95 96 97 98 99 100

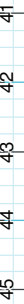
36 45 48 57 60



46 47 58 59 70



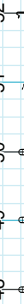
37 44 49 56 61



38 43 50 55 62



39 42 51 54 63



40 41 52 53 64



41 42 51 54 63



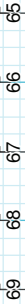
42 43 50 55 62



43 44 49 56 61



44 45 48 57 60



45 46 47 58 59 70



5 20 25 30 35 40 45 50 55 60 65

Director Viewpoint

Licensed to: Victor Neves  
Created on Pyware 3D.

m 14-17 move 16  
follow the leader, sharp corners



101



102



103



104



105



106



107



108



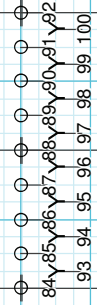
71 72 73 74 75 76



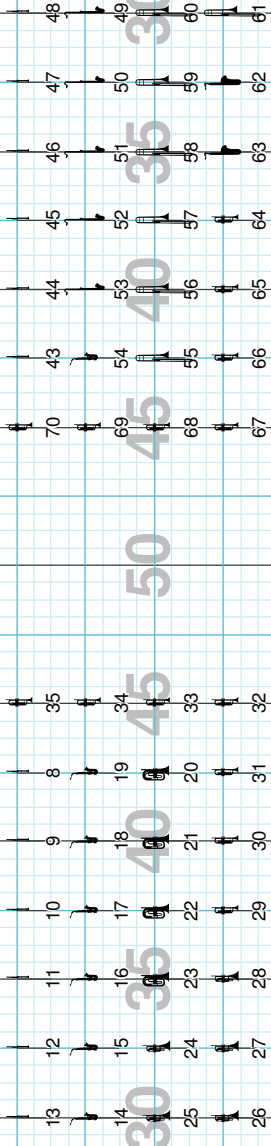
77 78 79 80



81 82 83



84 85 86 87 88 89 90 91 92  
93 94 95 96 97 98 99 100



5 20 25 30 35 40 45 50 55 60 65

Director Viewpoint

m 18 - 21 move 16  
reverse previous move

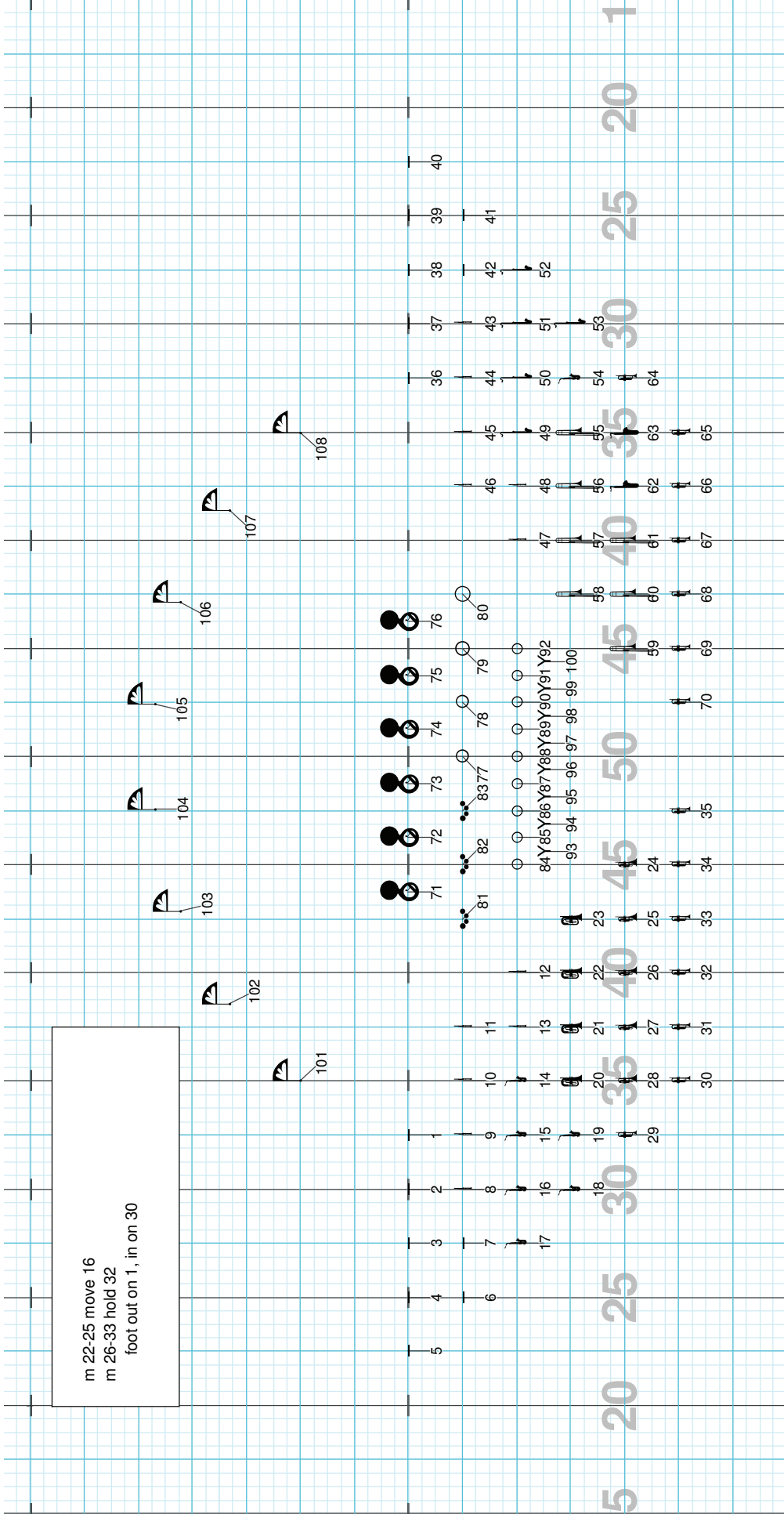
The grid contains musical notation for a drill. The columns are numbered 101 through 108. The rows are numbered 1 through 35. The notation includes notes, rests, and bar lines. A central section (rows 71-80) features a complex arrangement of notes and rests.

Director Viewpoint

Drill: Lapeer East 2010-1 Magical Mystery Tour.3dj

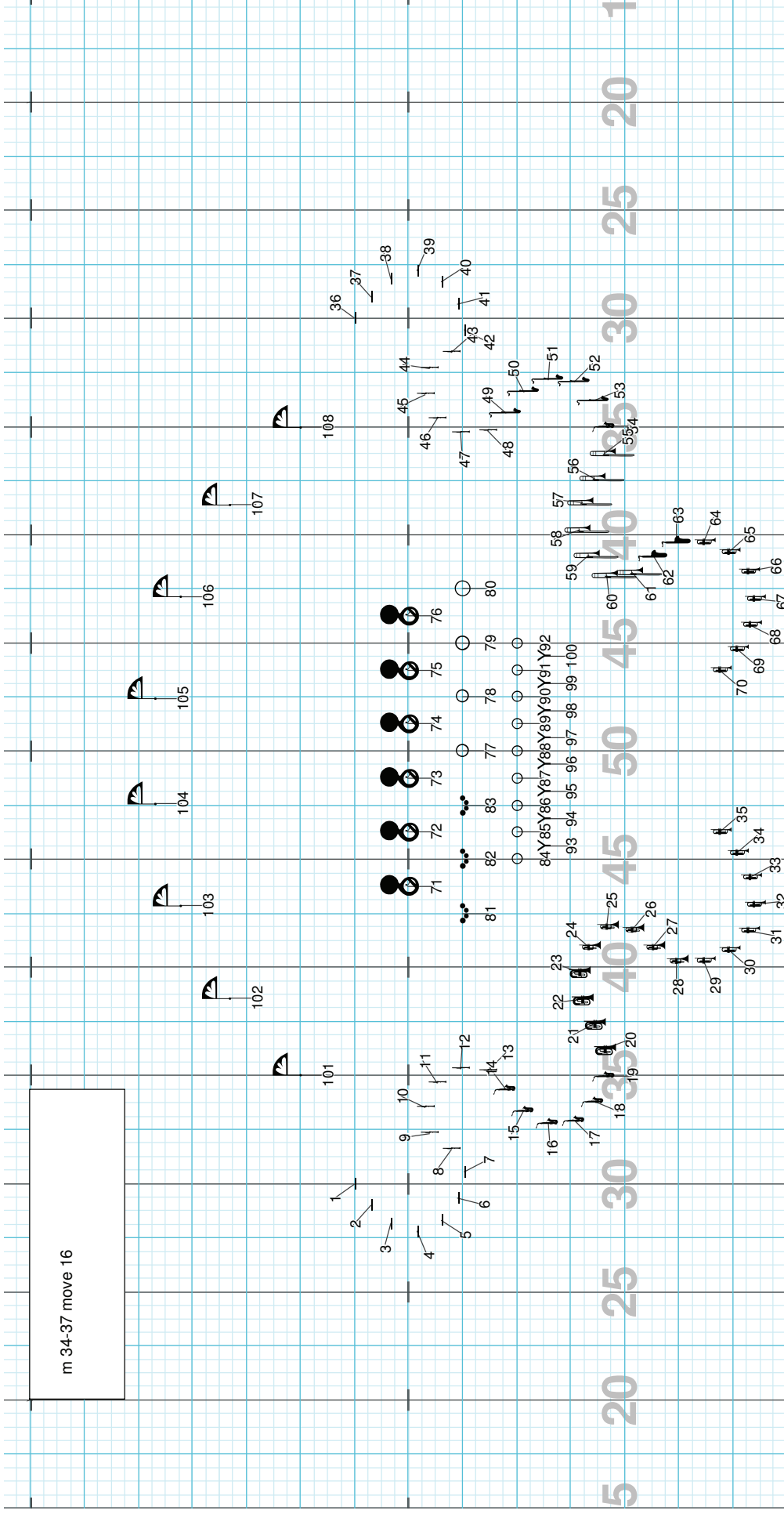
Set #6 Count: 100

m 22-25 move 16  
m 26-33 hold 32  
foot out on 1, in on 30



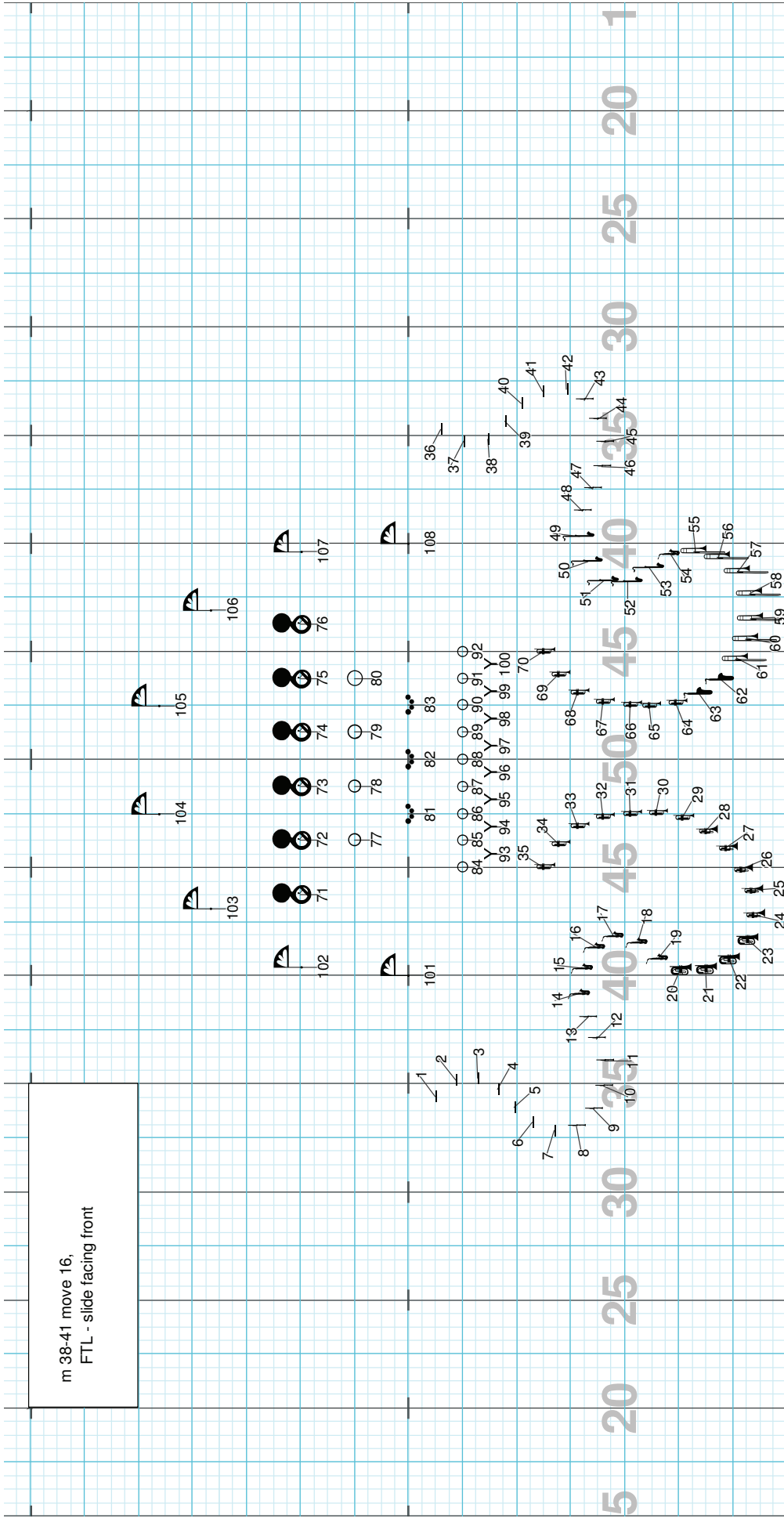
Director Viewpoint

m 34-37 move 16



Director Viewpoint

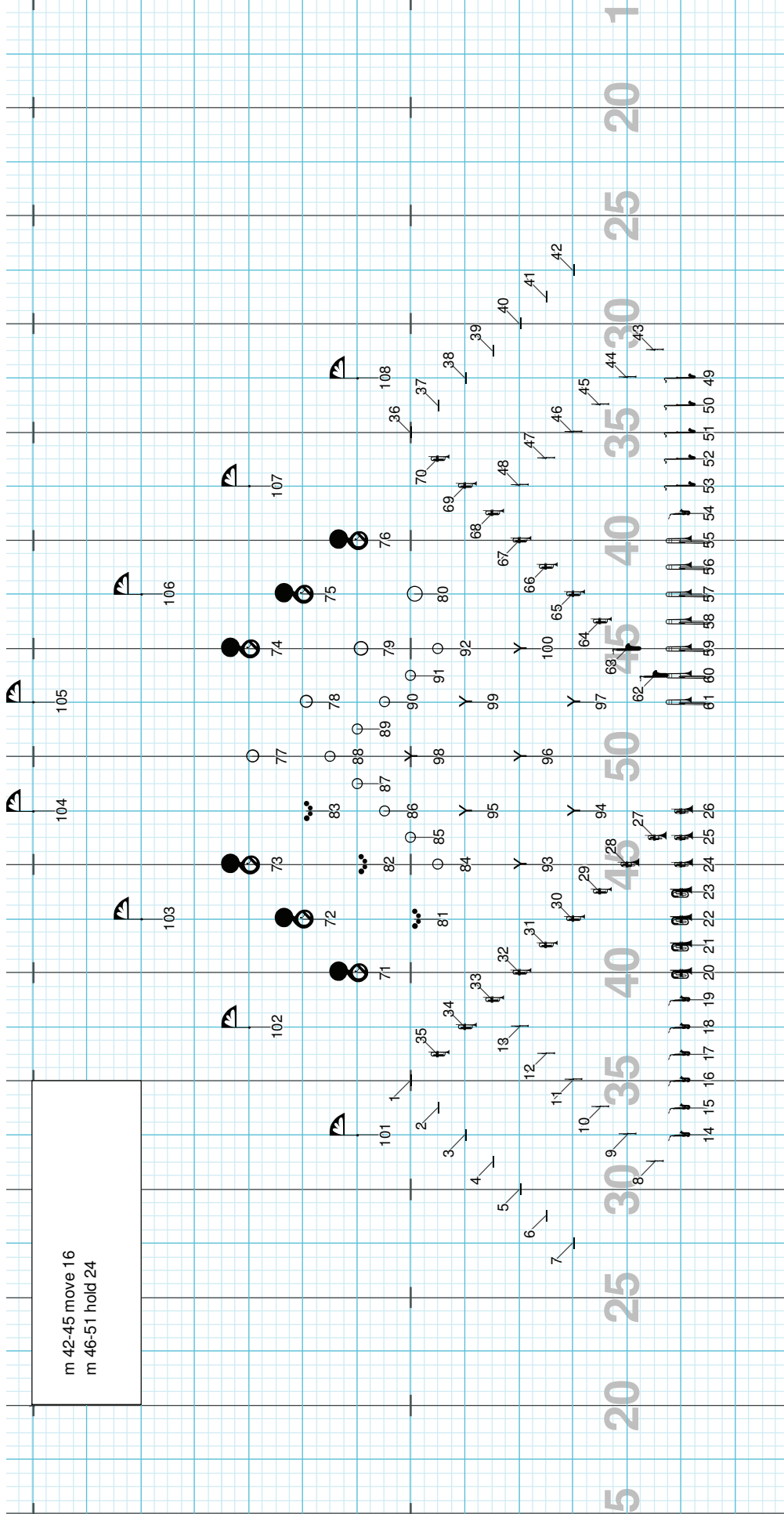
m 38-41 move 16,  
FTL - slide facing front



Director Viewpoint



m 42-45 move 16  
m 46-51 hold 24



Drill: Lapeer East 2010-1 Magical Mystery Tour.3dj

Set #10 Count: 220

m 52-55 move 16, horns to box  
m 56-59 hold 16, foot out, lean back on 13

101 102 103 104 105 106 107 108

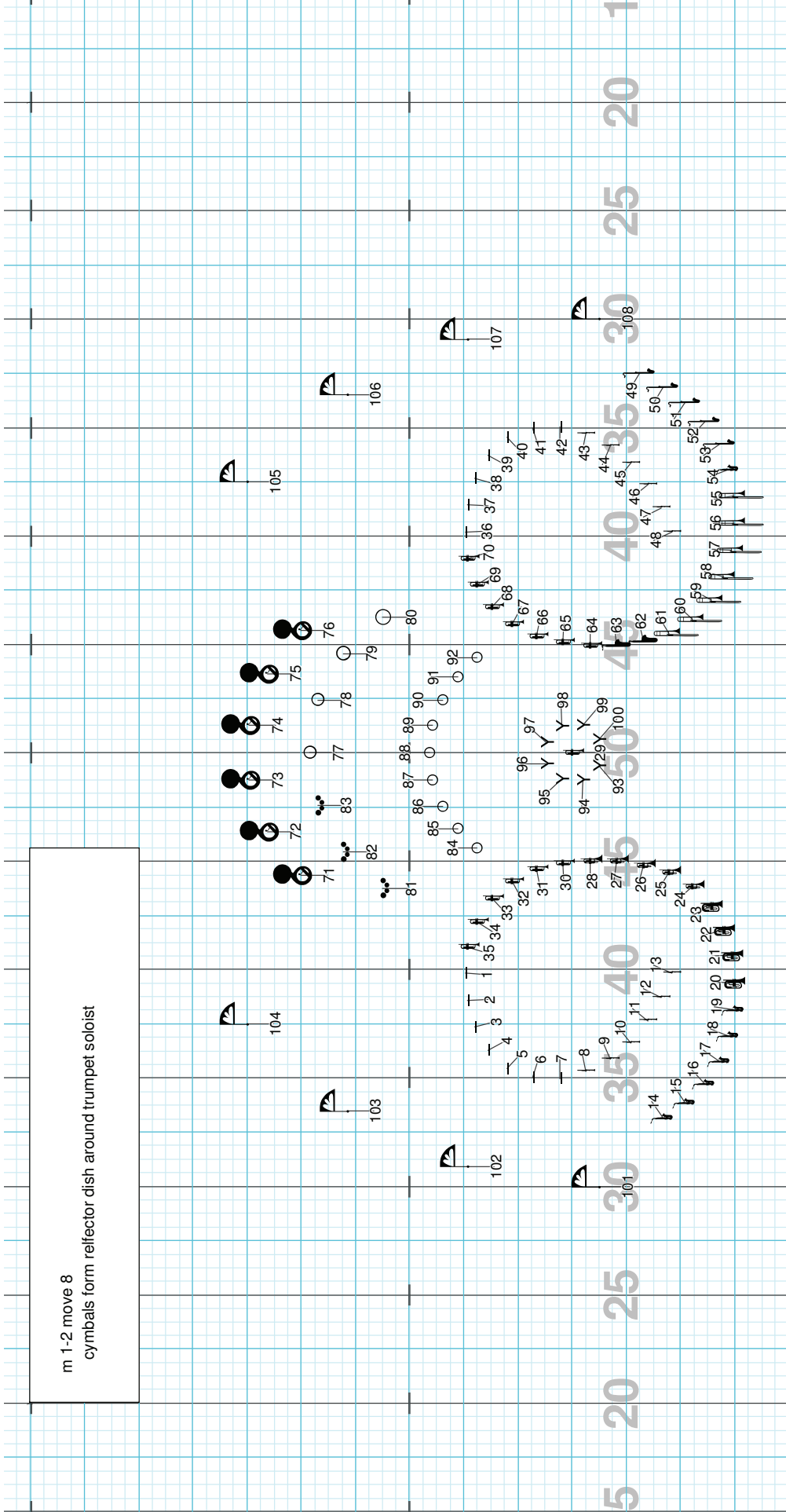
14 15 16 17 18 19 20 21 22 23 24 25 26  
27 28 29 30 31 32 33 34 35 36 37 38 39 40 41 42  
43 44 45 46 47 48 49 50 51 52 53 54 55 56 57 58 59 60 61 62 63 64 65 66 67 68 69 70 71 72 73 74 75 76 77 78 79 80 81 82 83 84 85 86 87 88 89 90 91 92 93 94 95 96 97 98 99 100

Director Viewpoint

HEY JUDE  
transition page

Director Viewpoint

m 1-2 move 8  
cymbals form reflector dish around trumpet soloist

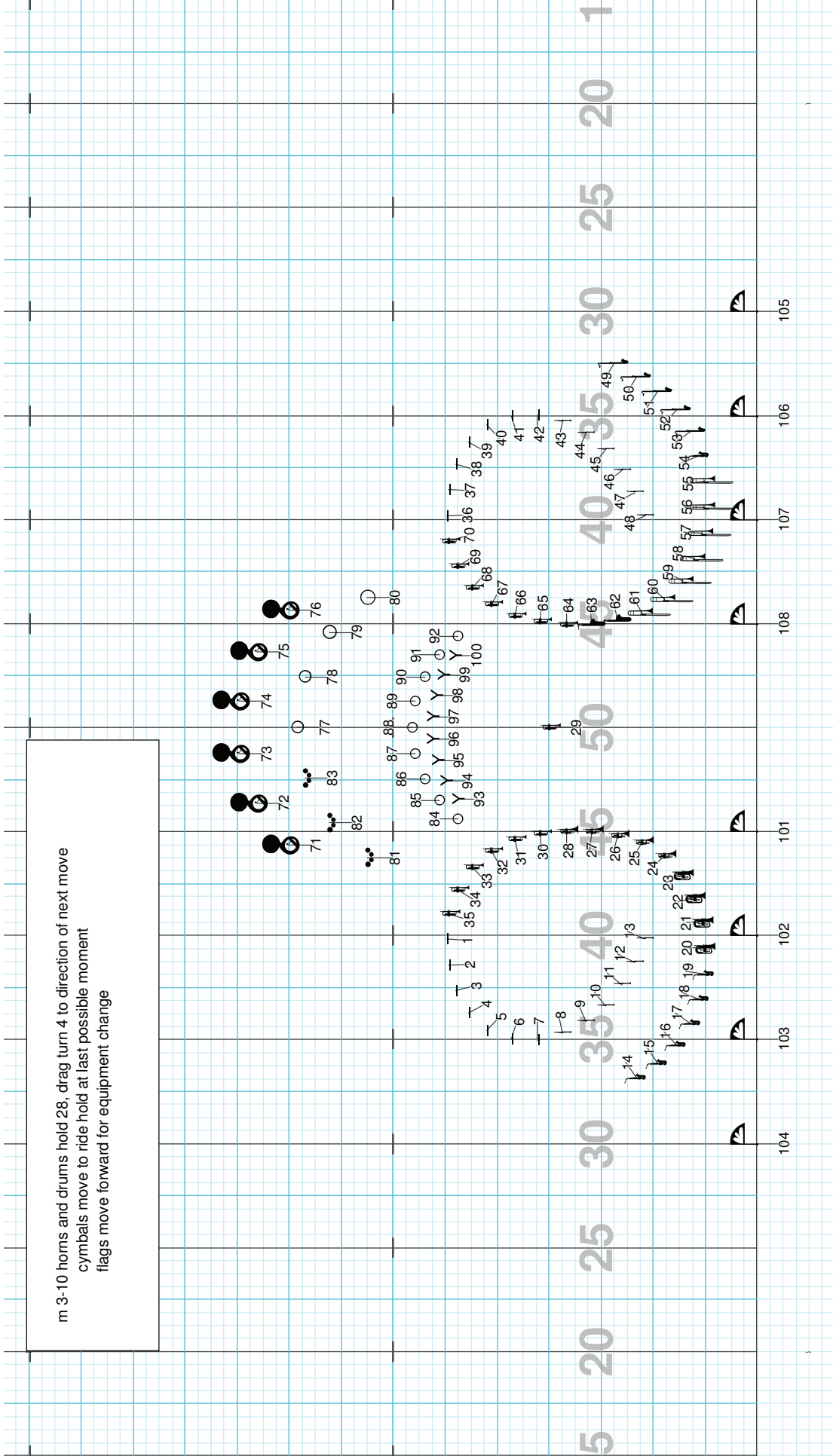


Director Viewpoint

Drill: Lapeer East 2010-2 Hey Jude

Set #3 Count: 40

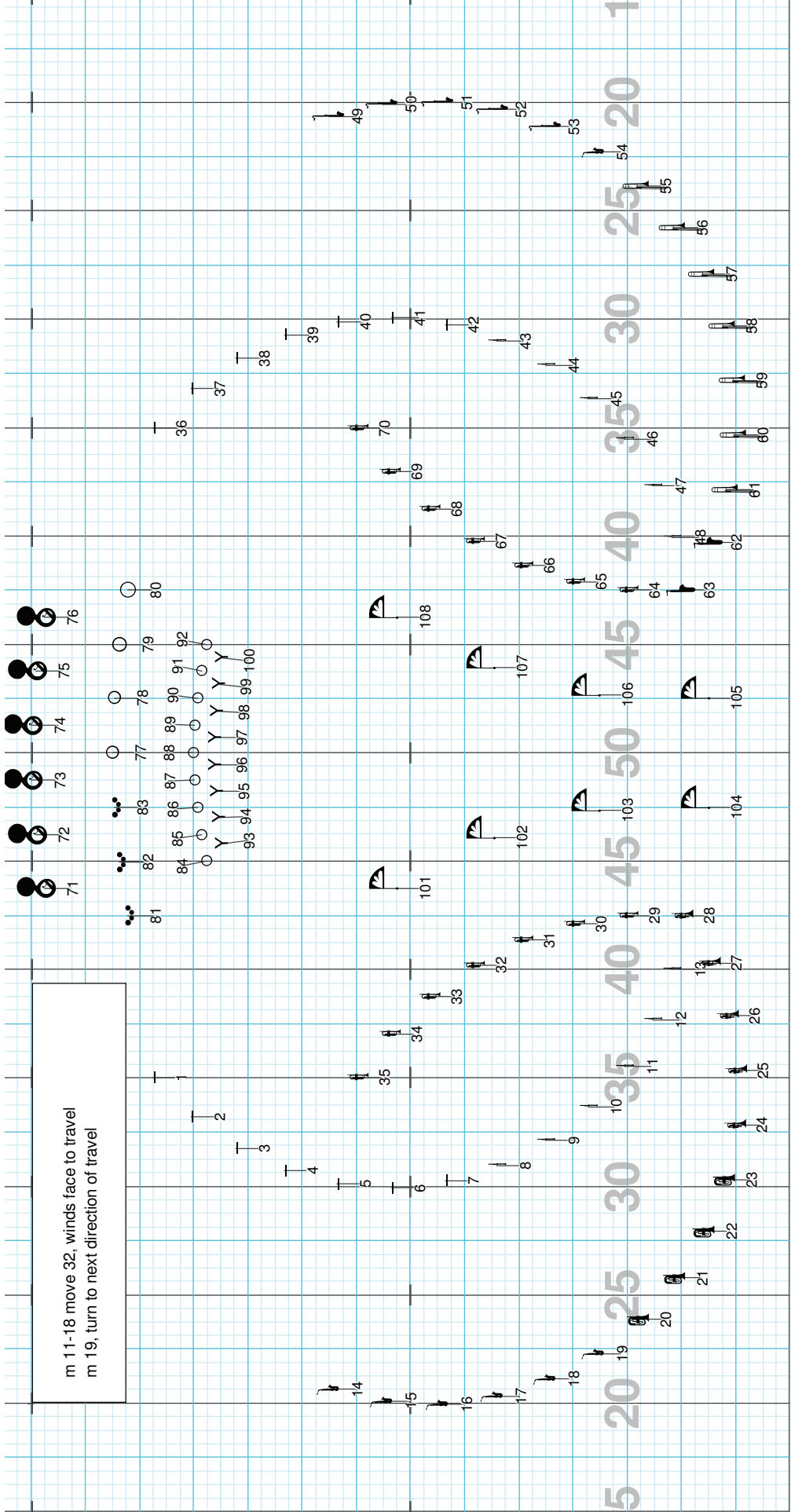
m 3-10 horns and drums hold 28, drag turn 4 to direction of next move  
cymbals move to ride hold at last possible moment  
flags move forward for equipment change



Director Viewpoint

Drill: Lapeer East 2010-2 Hey Jude

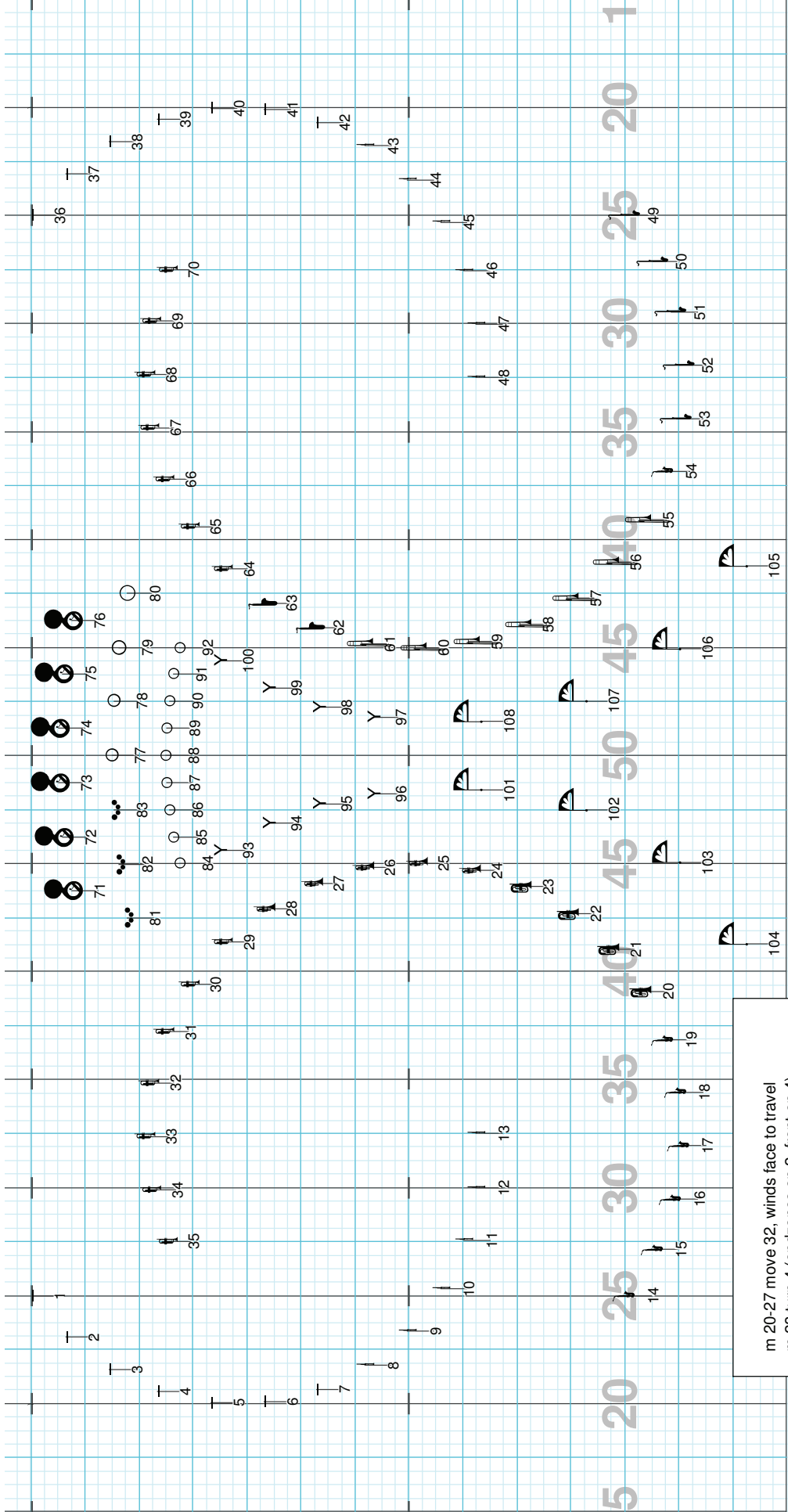
Set #4 Count: 72



Director Viewpoint

Drill: Lapeer East 2010-2 Hey Jude

Set #5 Count: 108



Director Viewpoint

Drill: Lapeer East 2010-2 Hey Jude

Set #6 Count: 146

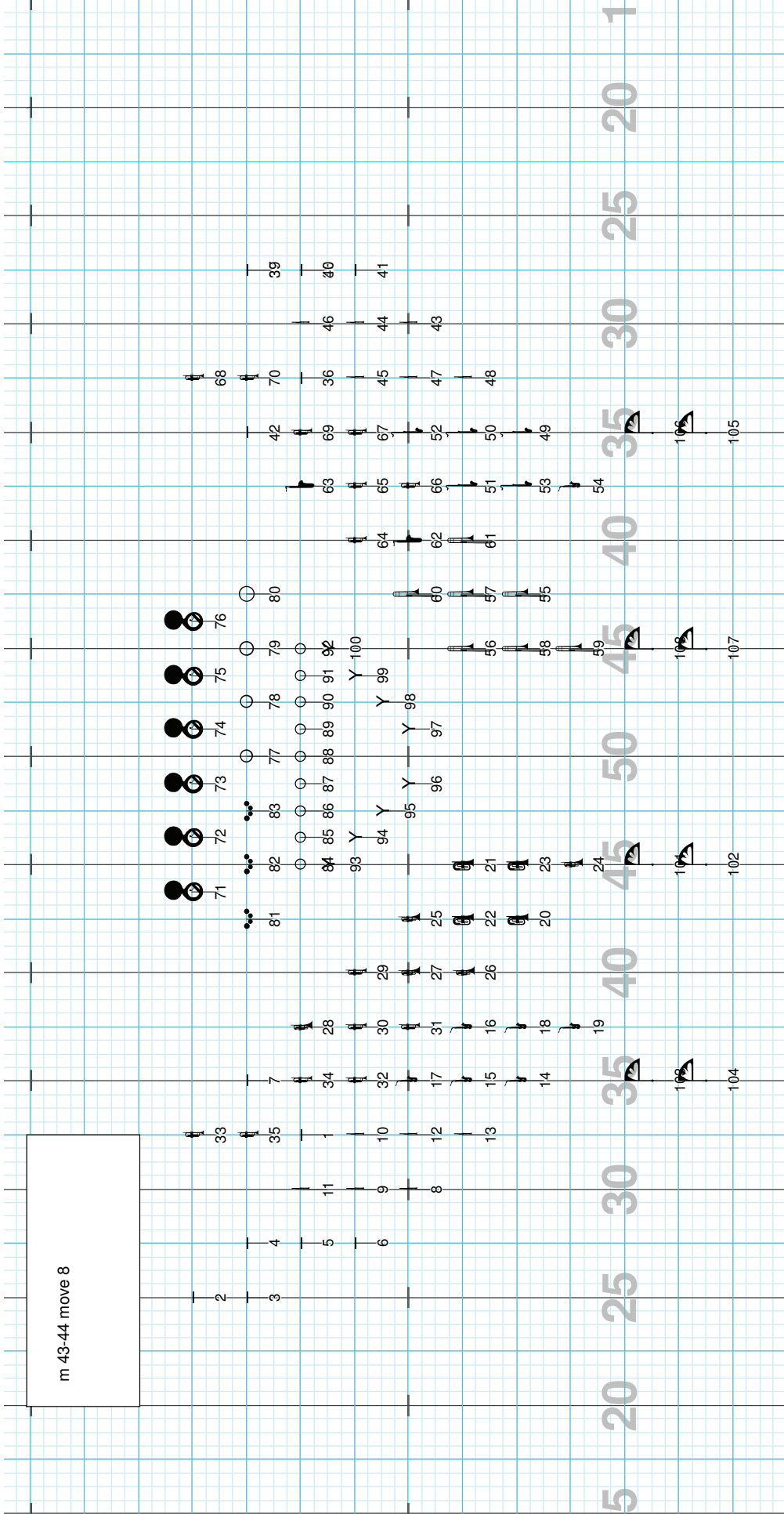
m 31-37 move 28  
m 38-40 hold 12  
m 41-42 mark 8 in new tempo

The grid contains 146 measures of drum set notation. The notation includes various symbols for snare, bass drum, and cymbal patterns. Specific markings include 'Y' and 'Y 100'.

Director Viewpoint

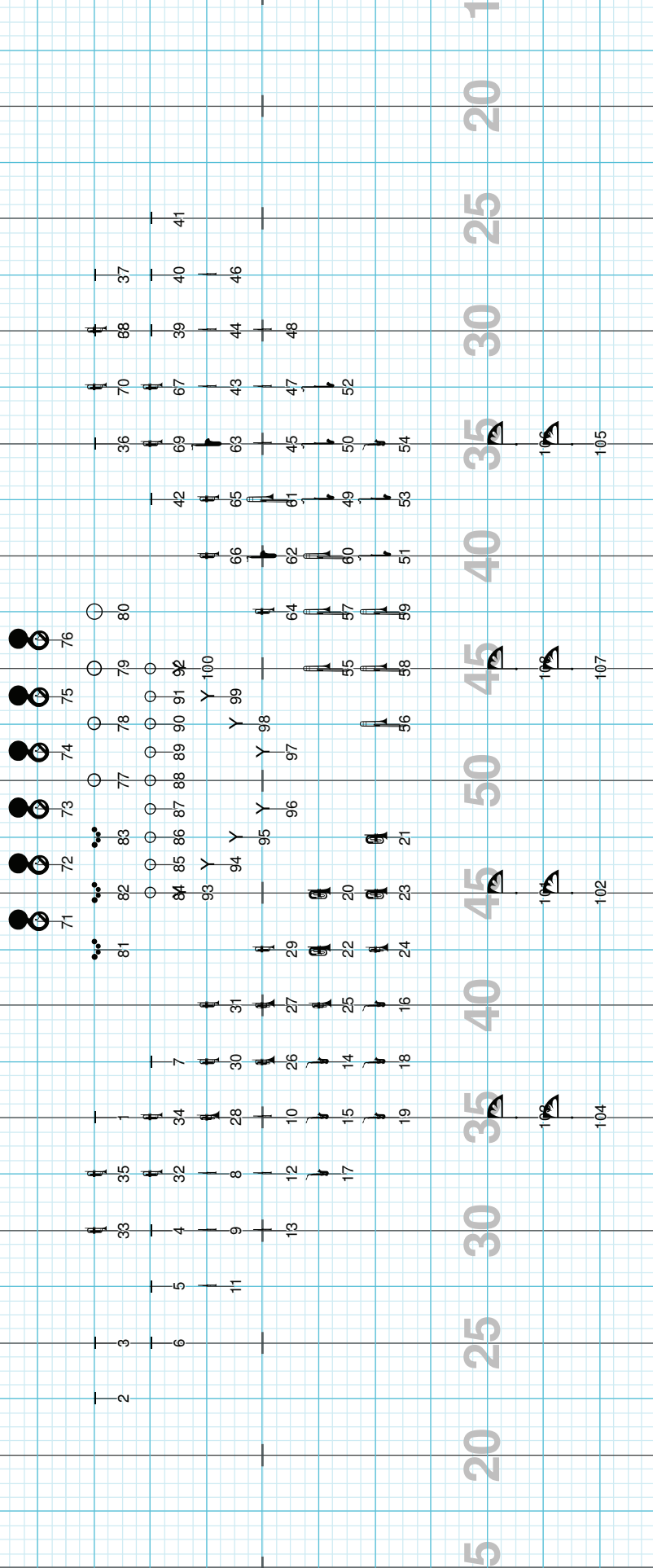


m 43-44 move 8



Director Viewpoint

m 45-46 move 8



5 20 25 30 35 40 45 50 55 60 65 70 75 80 85 90 95 100 105

105 104 103 102 101 100 99 98 97 96 95 94 93 92 91 90 89 88 87 86 85 84 83 82 81 80 79 78 77 76 75 74 73 72 71

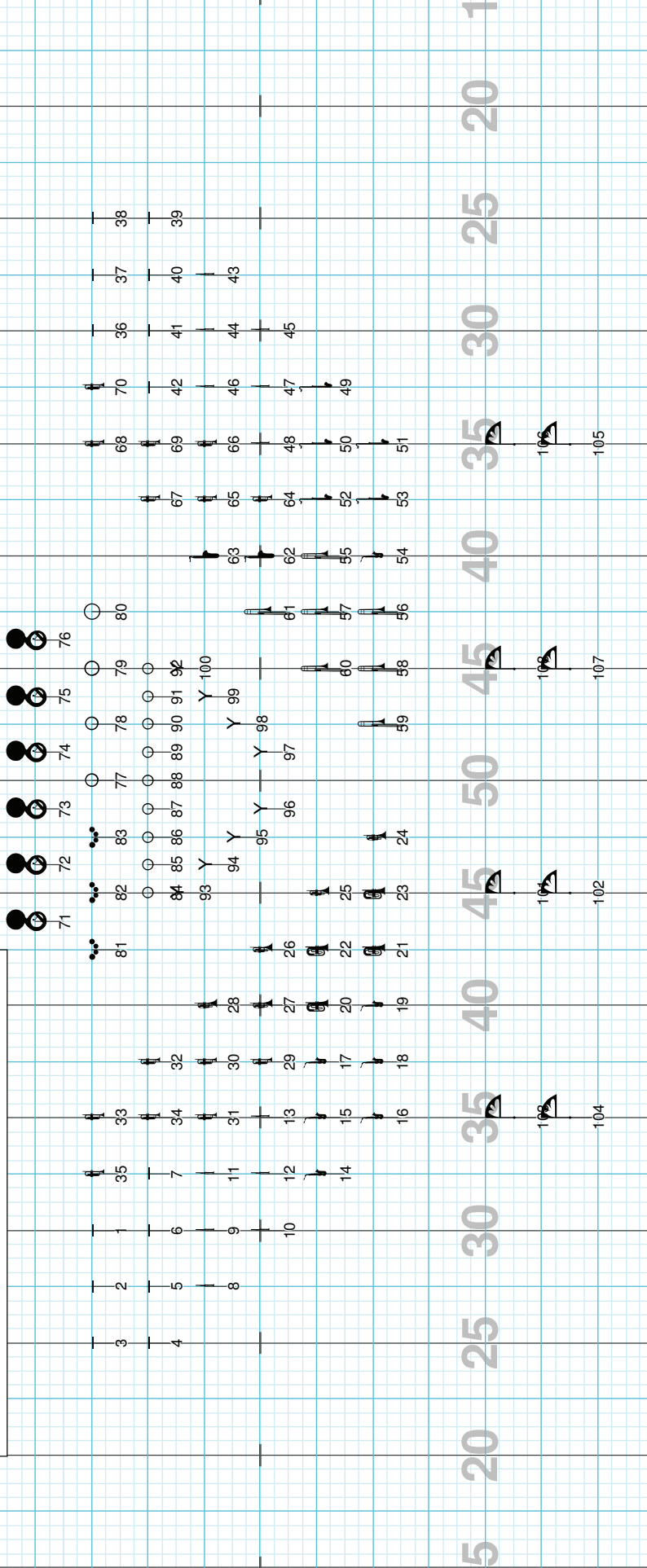
105 104 103 102 101 100 99 98 97 96 95 94 93 92 91 90 89 88 87 86 85 84 83 82 81 80 79 78 77 76 75 74 73 72 71

Director Viewpoint



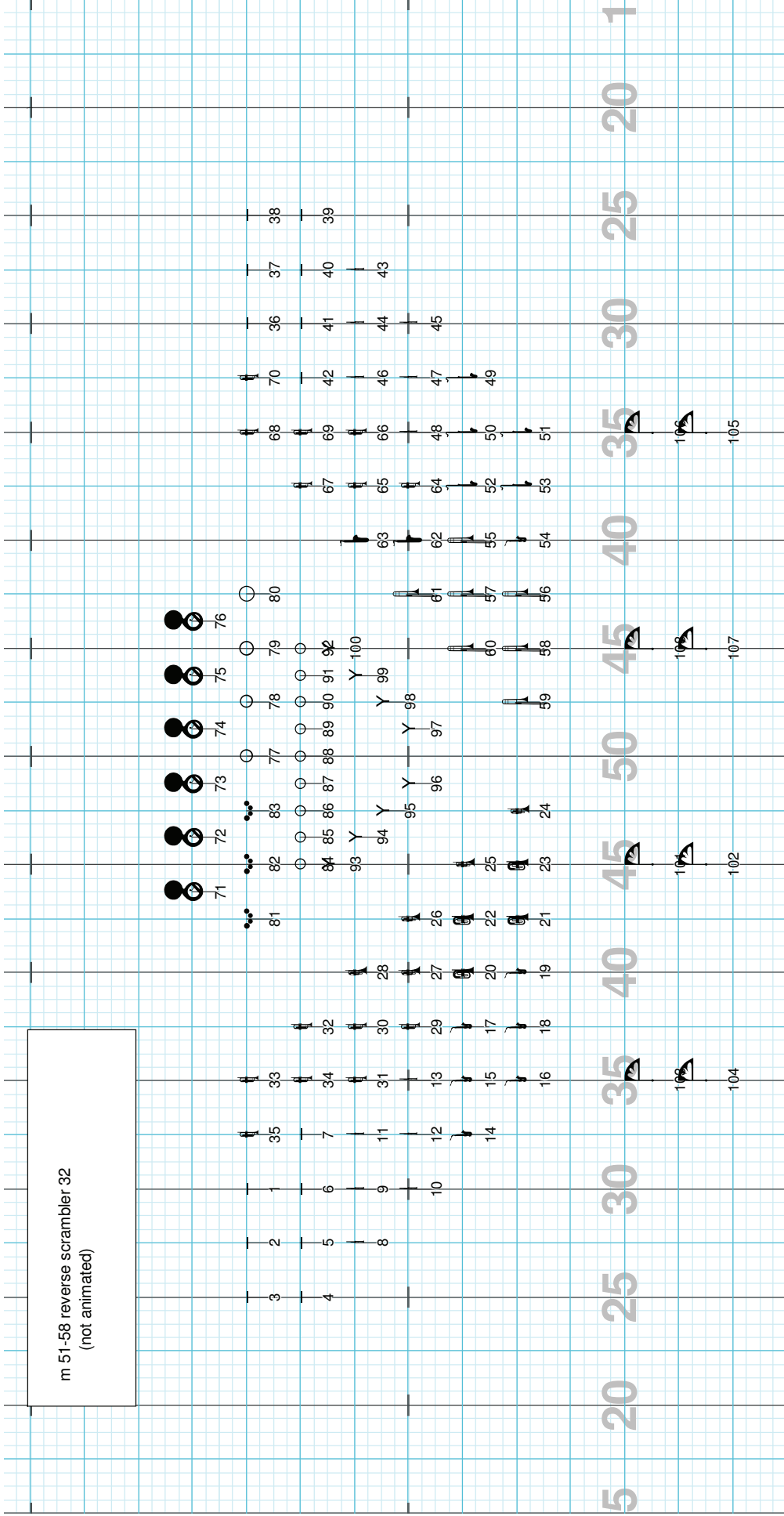
Pages 7-10

m 43-50 move 32 (the scrambler) focus front  
this is a 3 man squad turn on center pivot



Director Viewpoint

m 51-58 reverse scrambler 32  
(not animated)

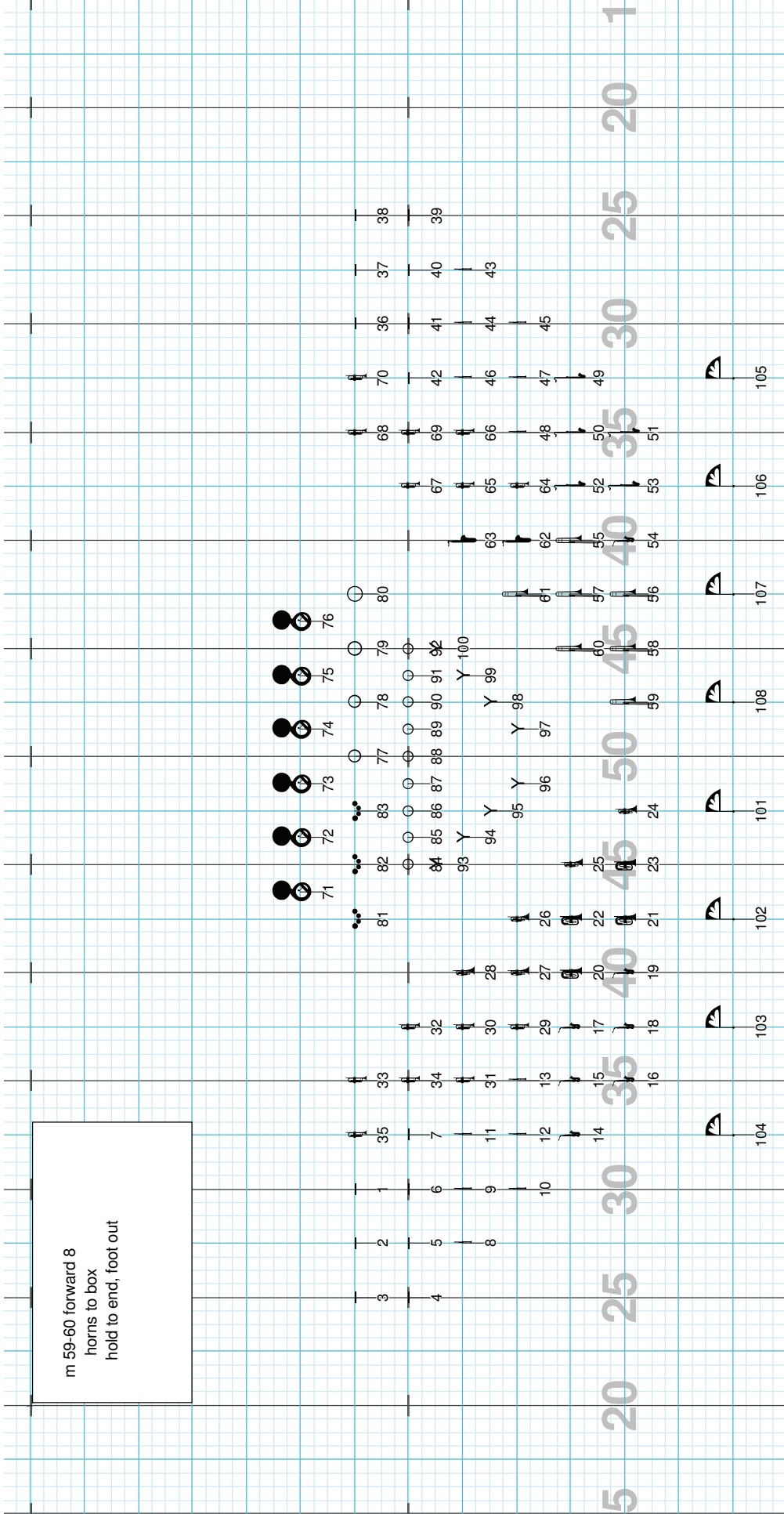


Director Viewpoint

Drill: Lapeer East 2010-2 Hey Jude

Set #12 Count: 238

m 59-60 forward 8  
horns to box  
hold to end, foot out



Director Viewpoint

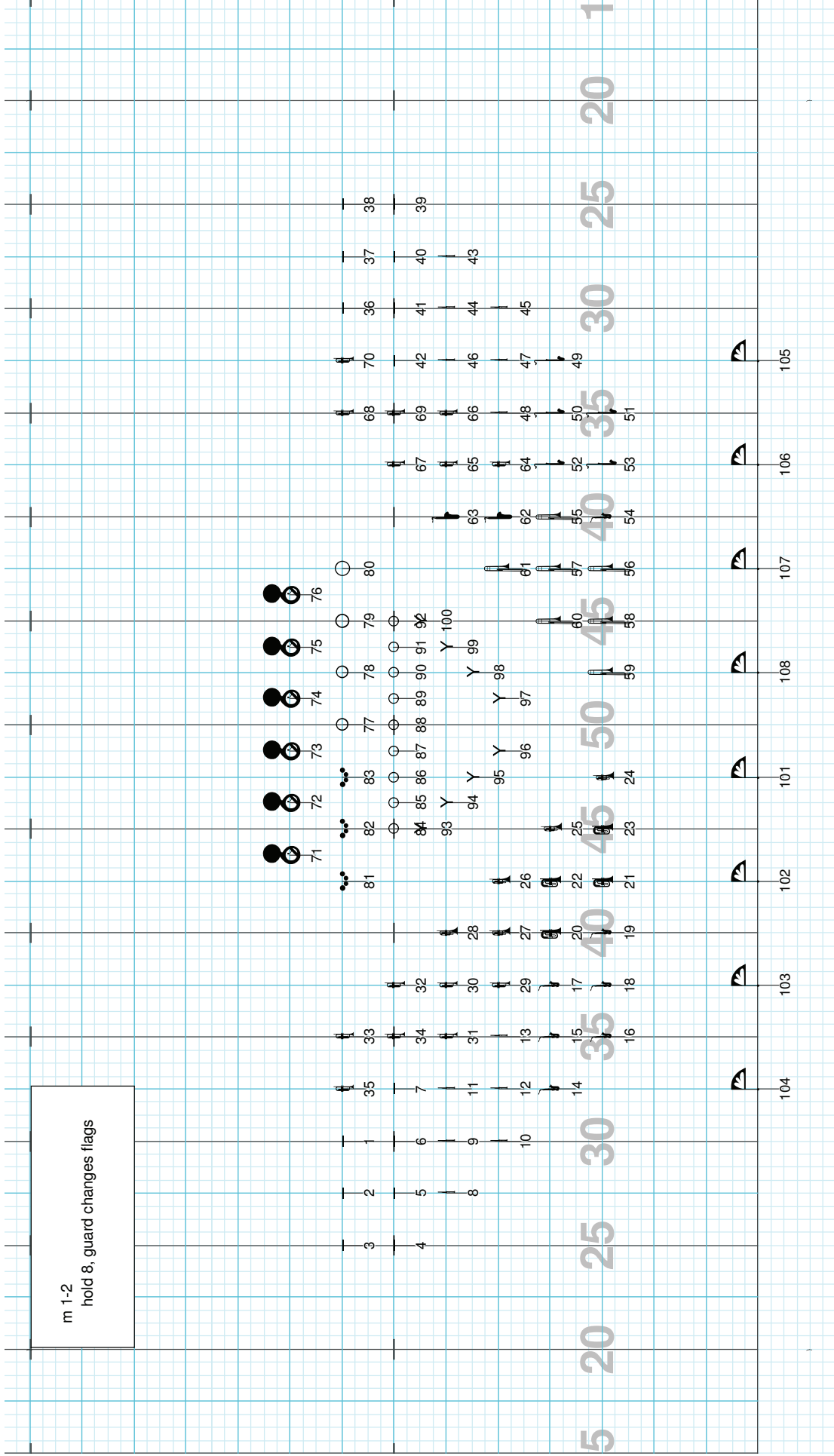
ELEANOR RIGBY  
Transition page

Director Viewpoint

**Drill: Lapeer East 2010-3 Eleanor Rigby**

Set #2 Count: 8

m 1-2  
hold 8, guard changes flags



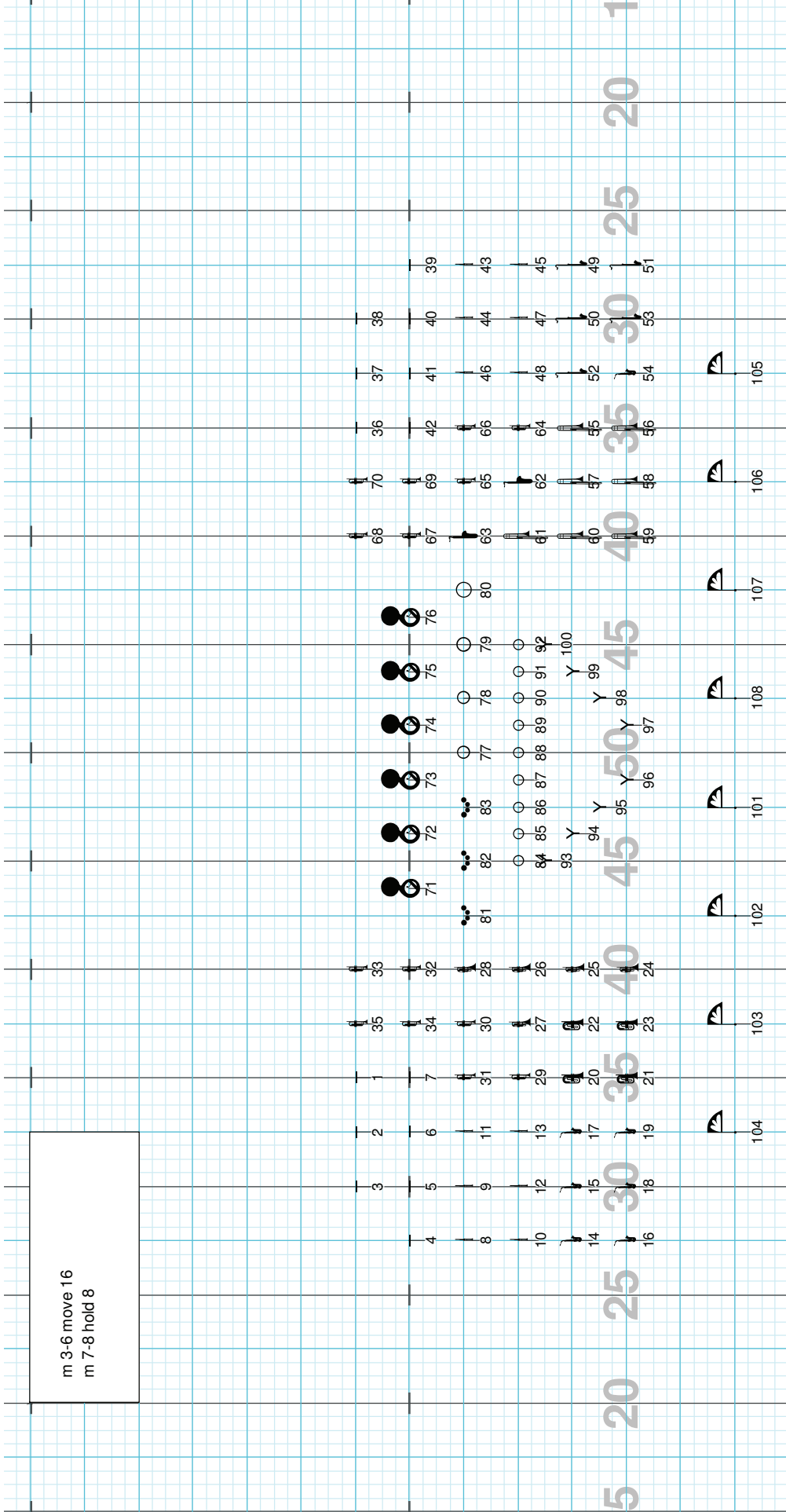
Director Viewpoint



Drill: Lapeer East 2010-3 Eleanor Rigby

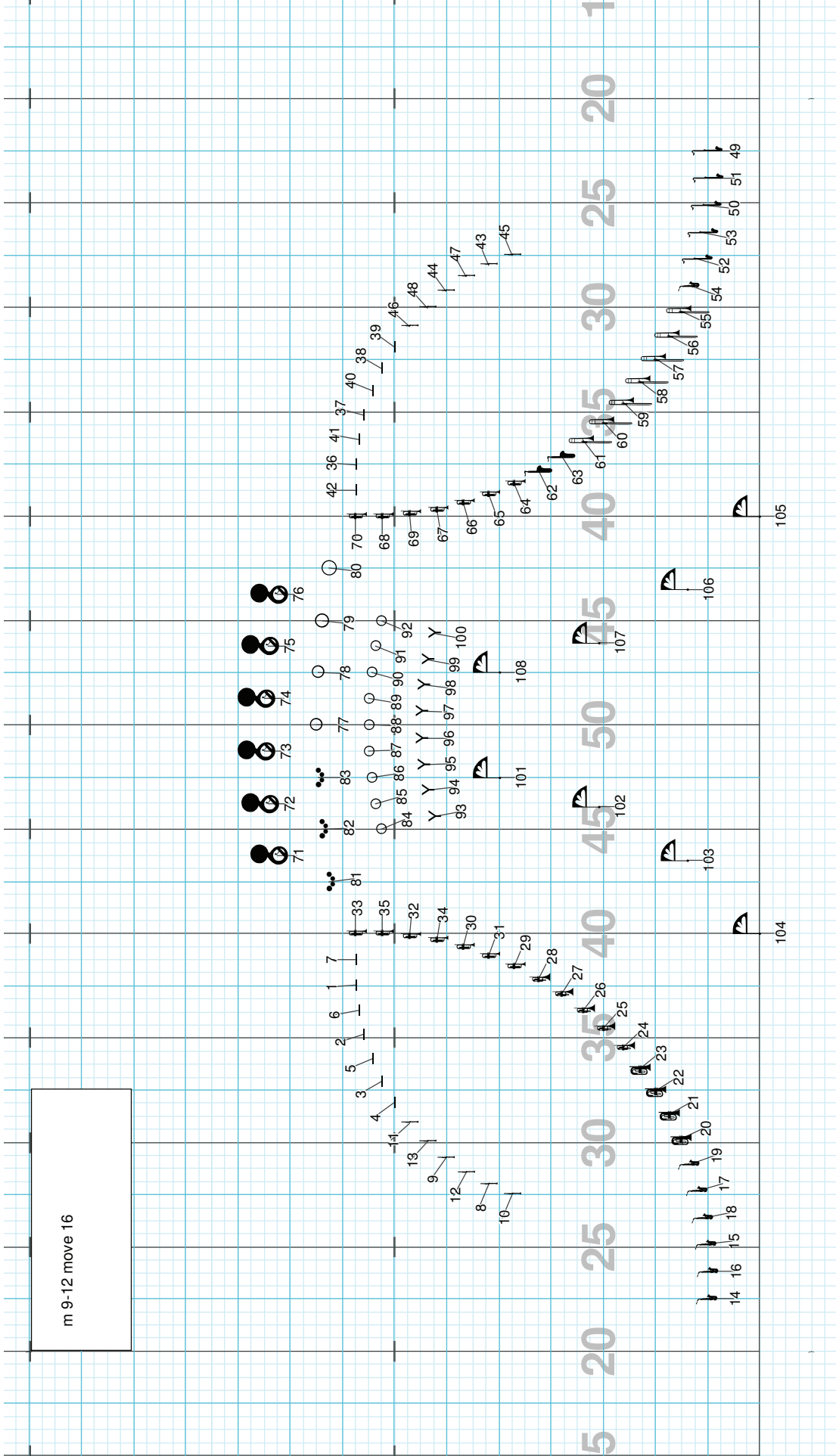
Set #3 Count: 24

m 3-6 move 16  
m 7-8 hold 8



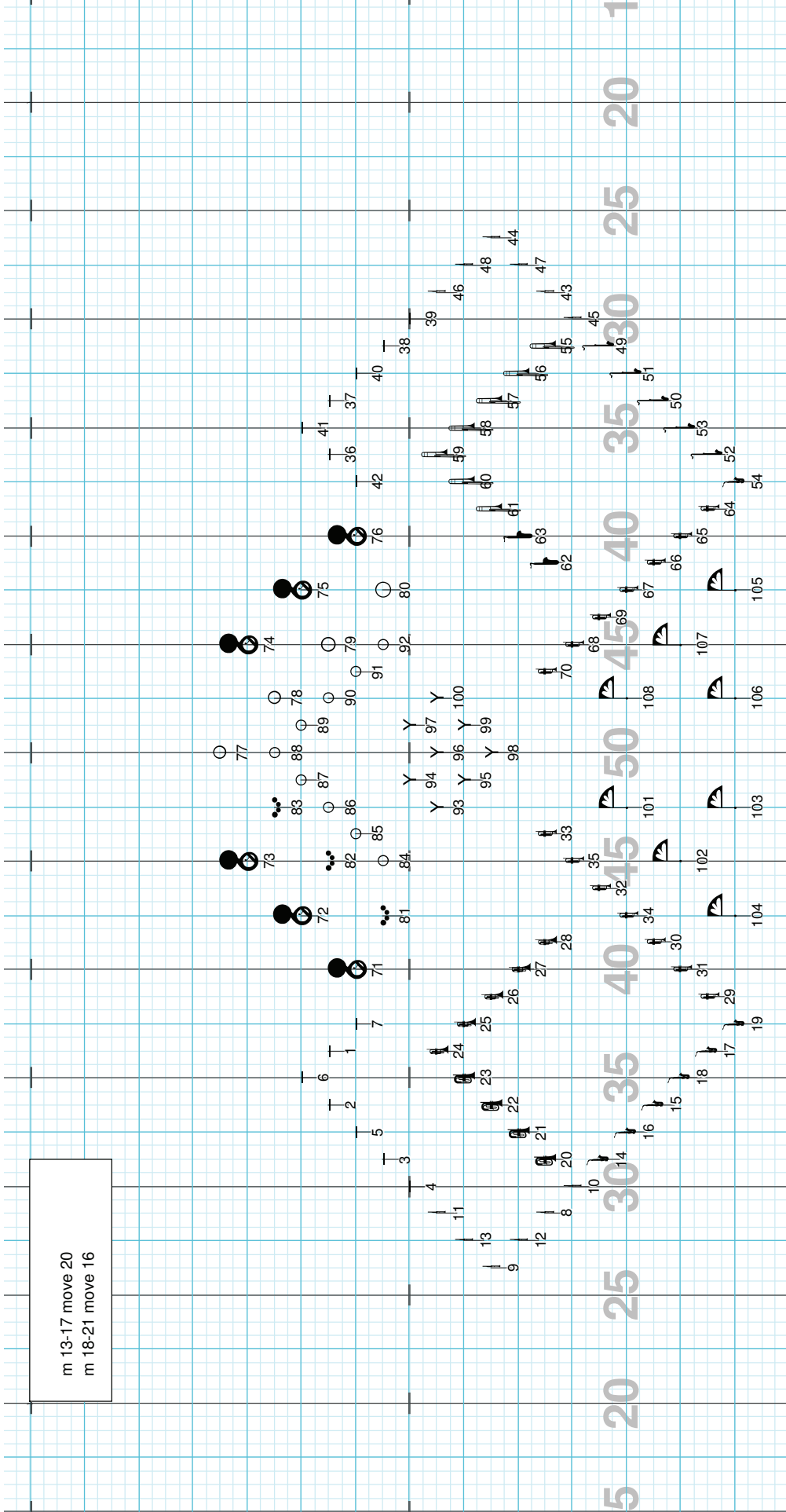
Director Viewpoint

m 9-12 move 16



Director Viewpoint

m 13-17 move 20  
m 18-21 move 16

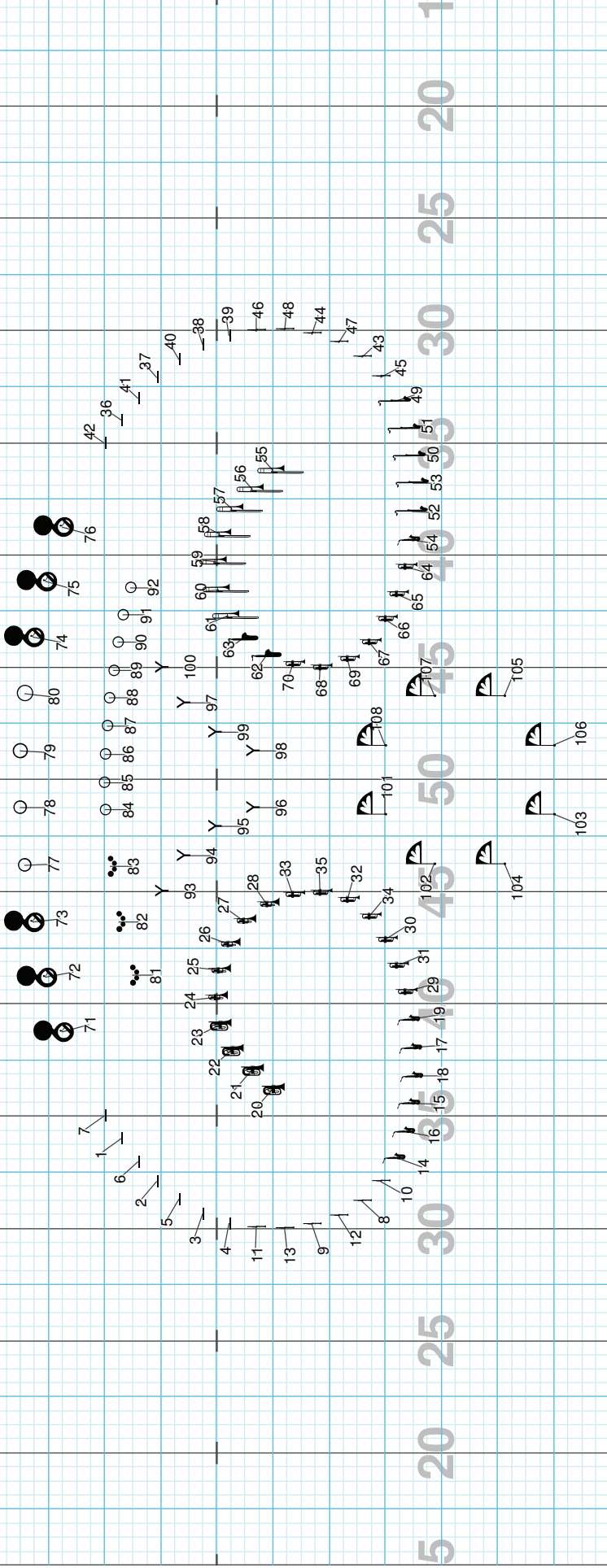


Director Viewpoint

Drill: Lapeer East 2010-3 Eleanor Rigby

Set #6 Count: 100

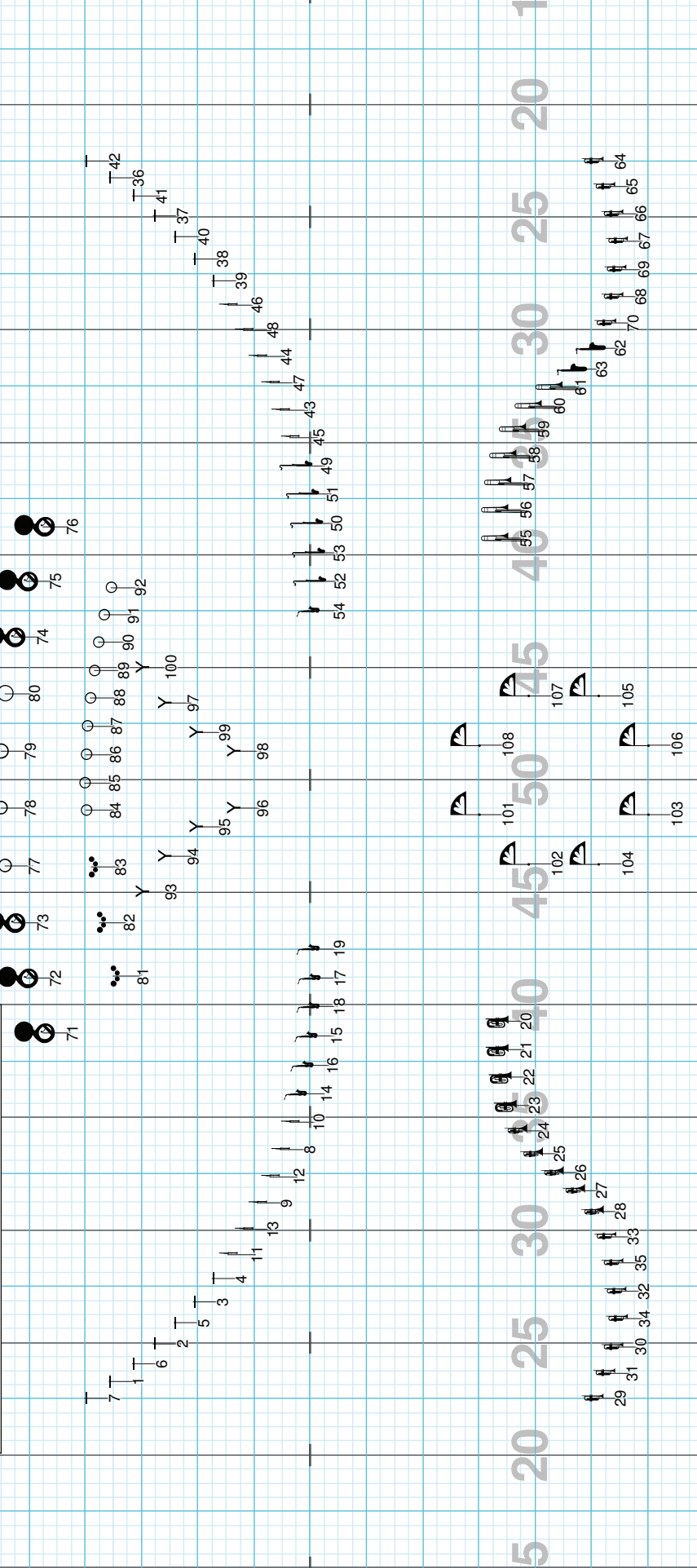
m 22-25 move 16  
m 26-33 hold 32  
horn flash to 50 on 29, drag back front on 30-32  
trumpet soloist forward



Director Viewpoint

Licensed to: Victor Neves  
Created on Pyware 3D.

m 34-41 move 32 trumpet lines FTL, substitute trumpet positions as needed

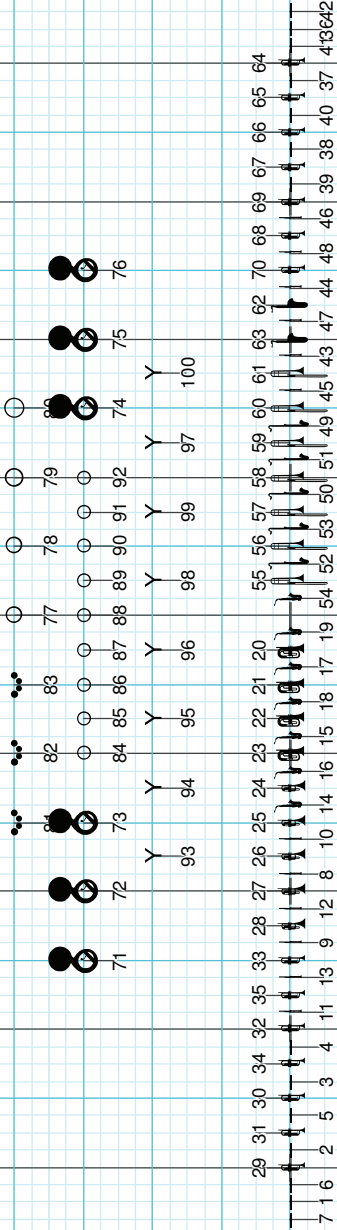


Director Viewpoint

m 42-49 move 32

Director Viewpoint

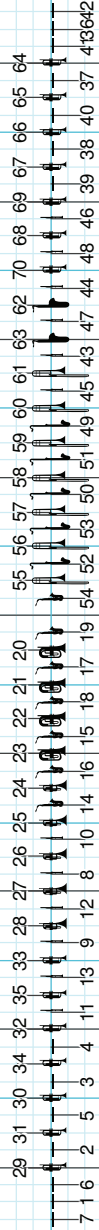
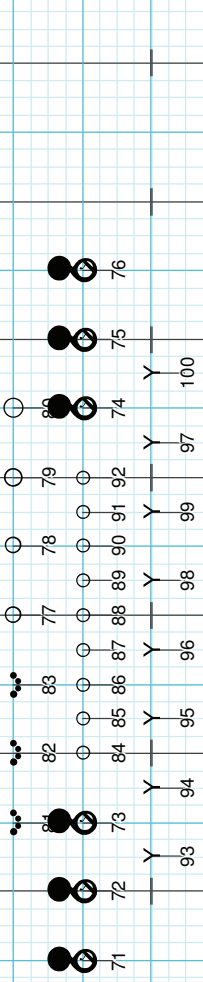
m 50-51 move 8



5 20 25 30 35 40 45 50 55 60 65 70 75 80 85 90 95 100 105 110 115 120 125 130 135 140 145 150 155 160 165 170 175 180 185 190 195 200 204

Director Viewpoint

m 52-55 move forward 15  
high mark time half steps  
horns to box



5 20 25 30 35 40 45 50 55 60 65 70 75 80 85 90 95 100

103 104 102 101 108 107 105 106

29 31 30 34 32 35 33 28 27 26 25 24 23 22 21 20 55 56 57 58 59 60 61 63 62 70 68 69 67 66 65 64

7 16 2 5 3 4 11 13 9 12 8 10 14 16 15 18 17 19 54 52 53 50 51 49 45 43 47 44 48 46 39 38 40 37 4 36 42

5 20 25 30 35 40 45 50 55 60 65 70 75 80 85 90 95 100

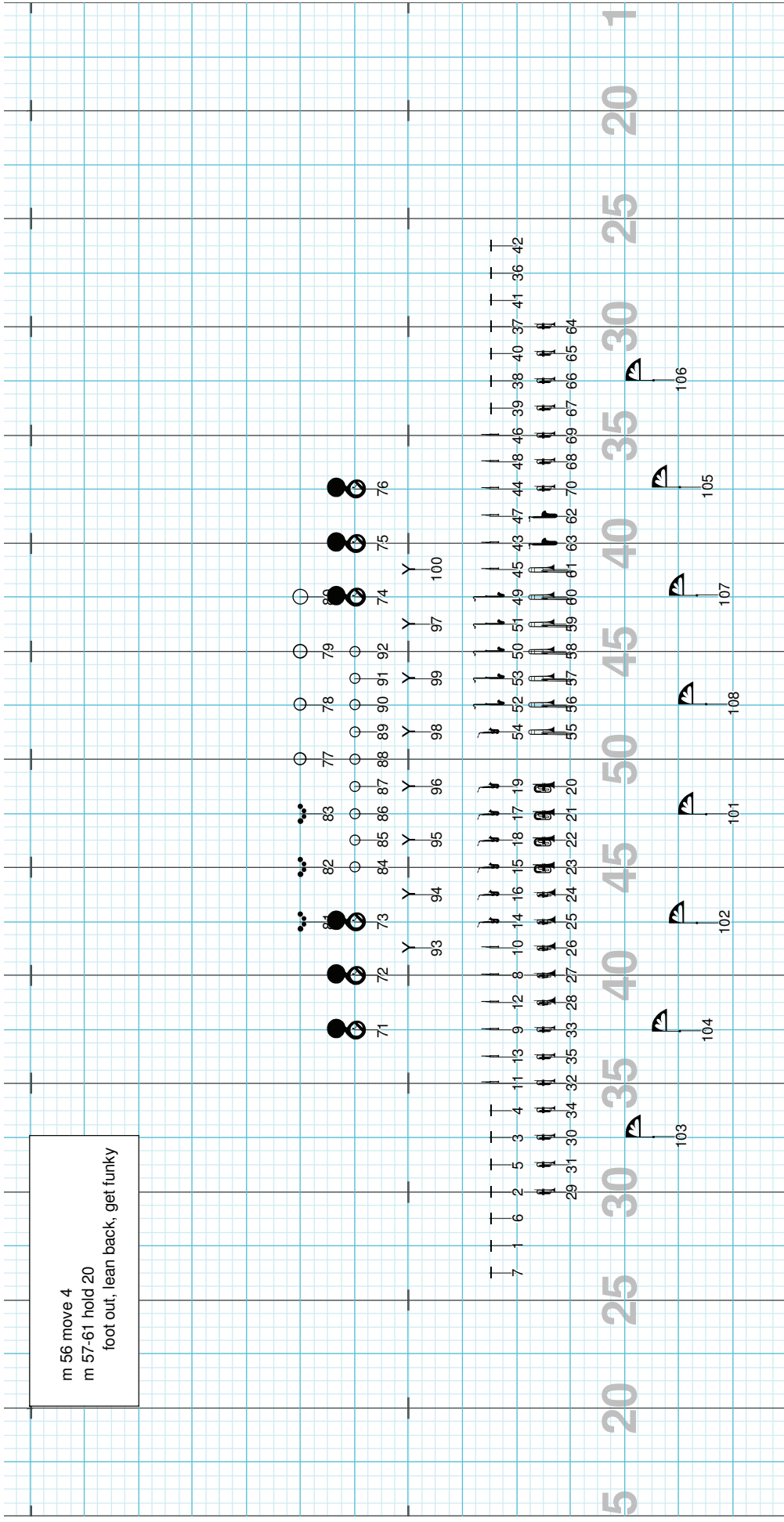
Director Viewpoint



Drill: Lapeer East 2010-3 Eleanor Rigby

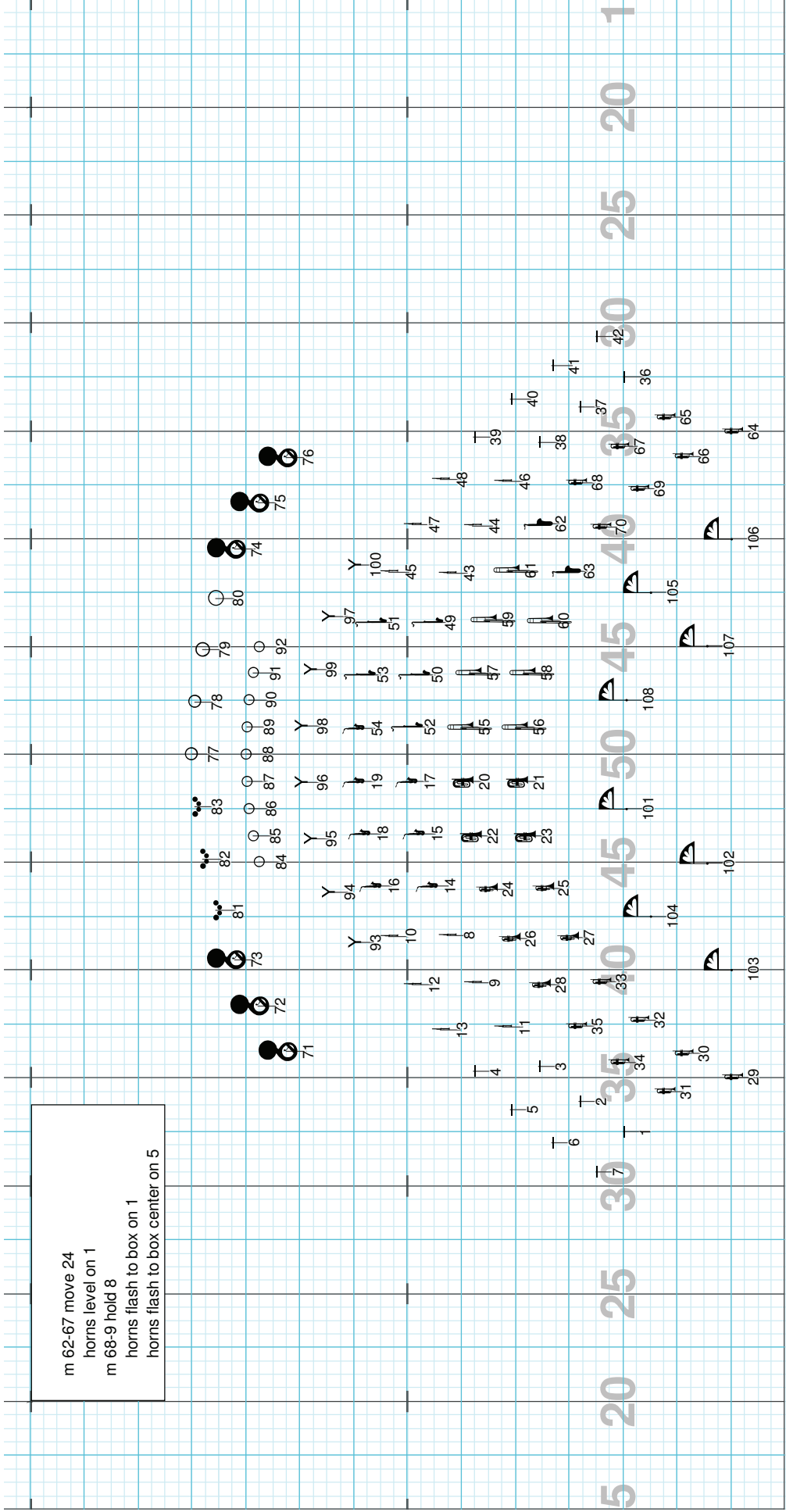
Set #11 Count: 224

m 56 move 4  
m 57-61 hold 20  
foot out, lean back, get funky



Director Viewpoint

m 62-67 move 24  
 horns level on 1  
 m 68-9 hold 8  
 horns flash to box on 1  
 horns flash to box center on 5



Director Viewpoint