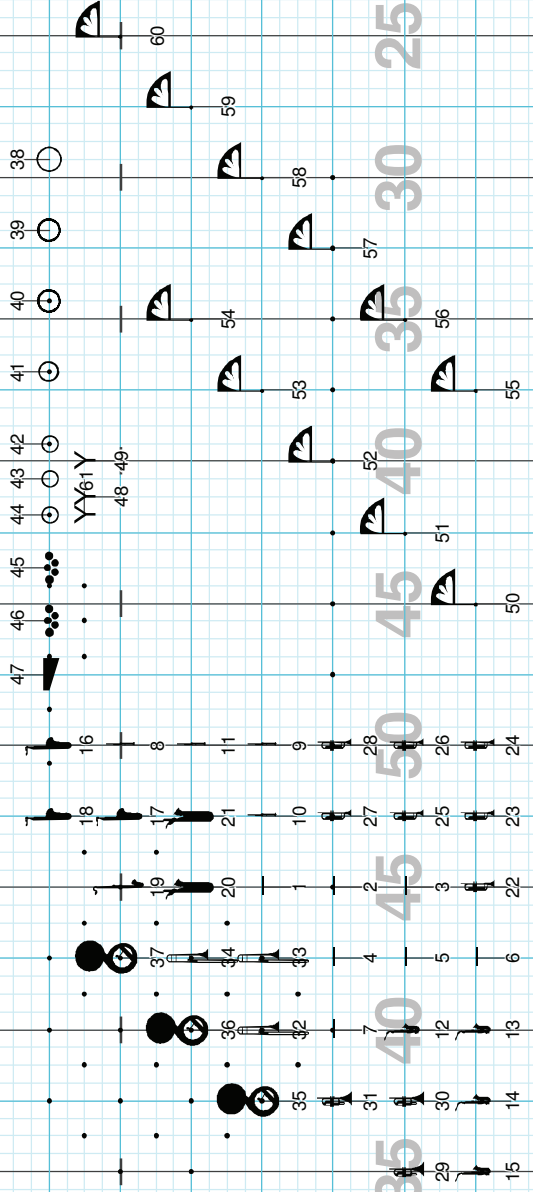
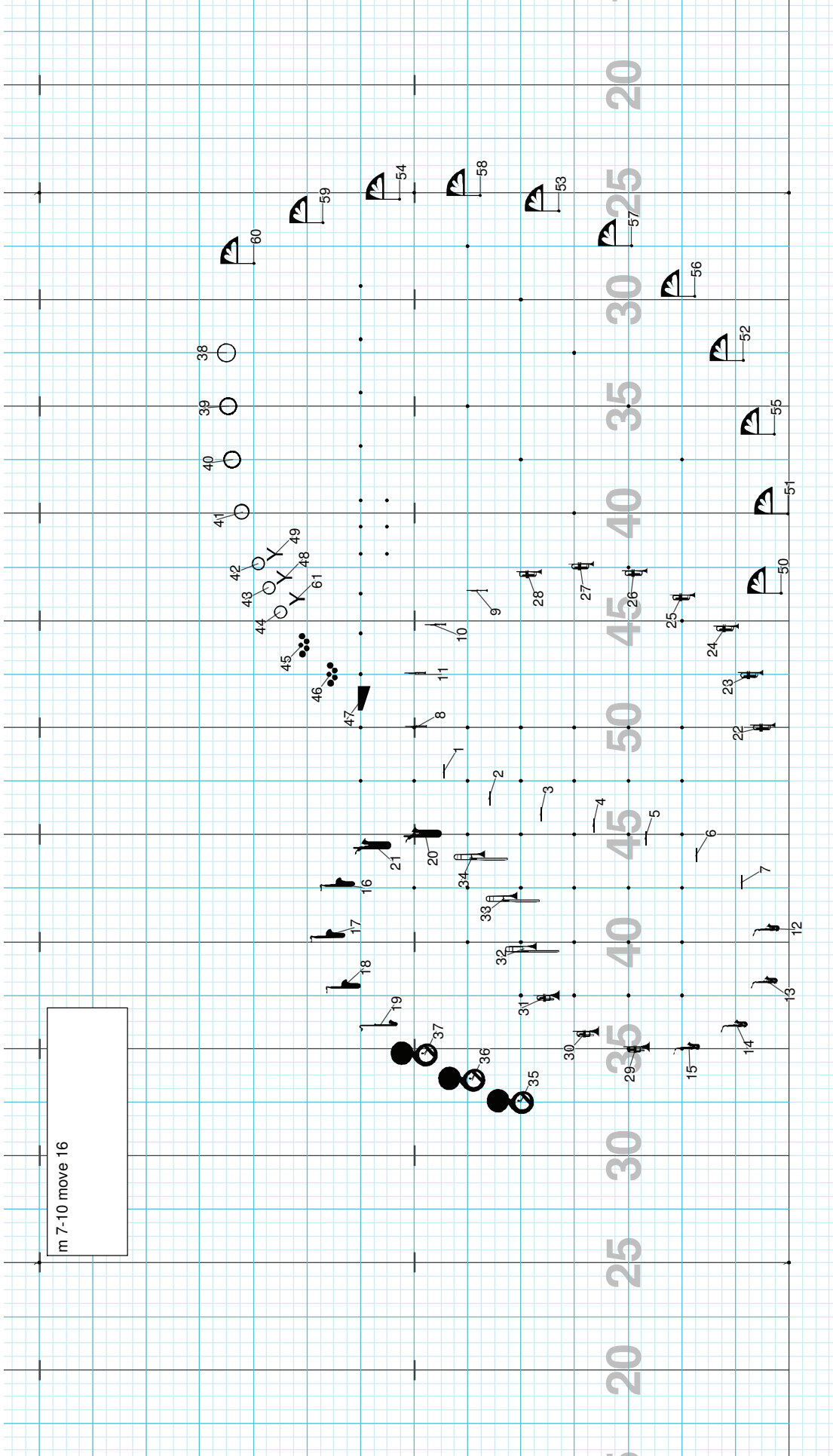


m 1-5 move 20
m 6 hold 4



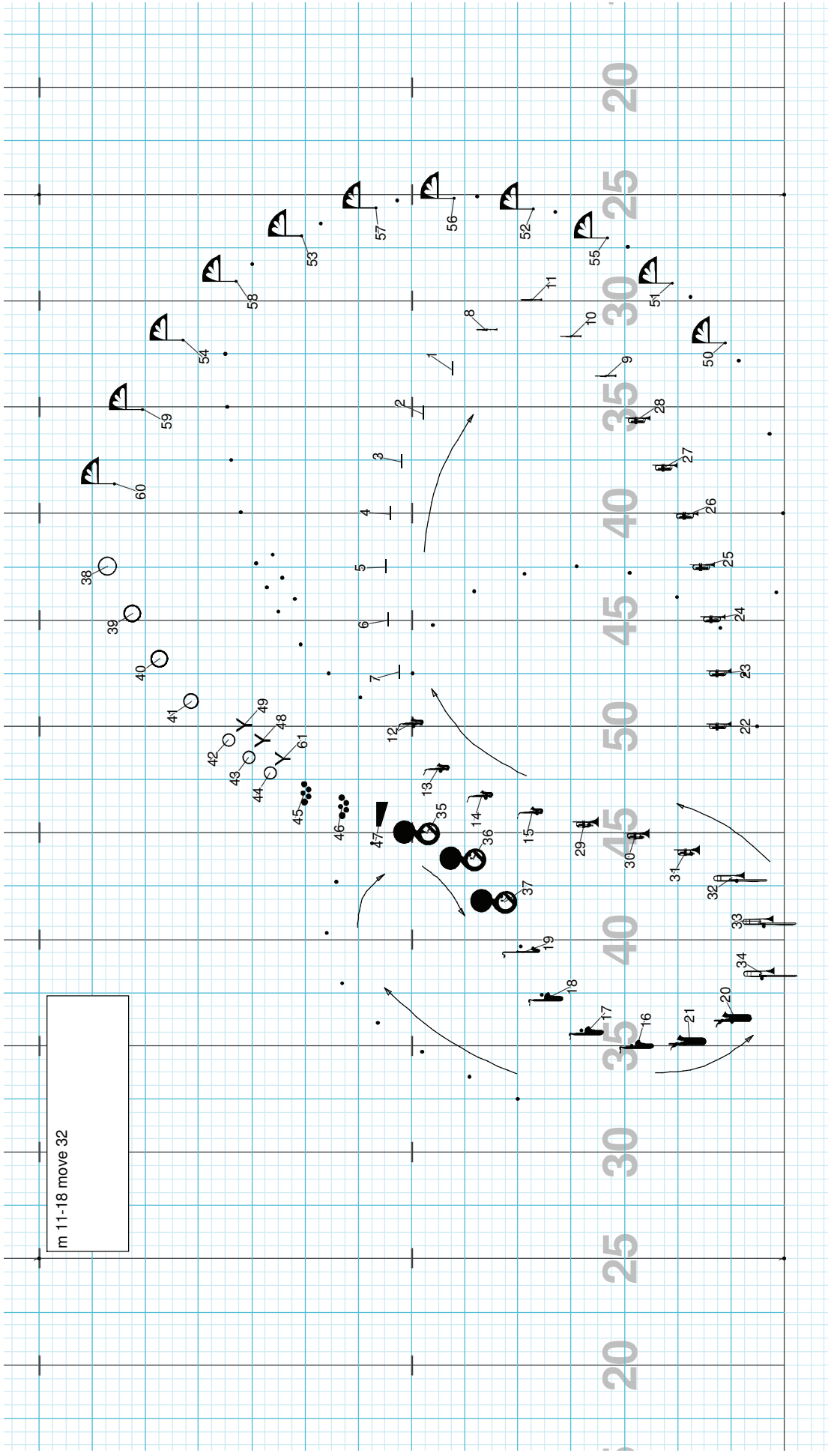
Director Viewpoint

m 7-10 move 16



Director Viewpoint

m 11-18 move 32



Director Viewpoint

m 19-24 move 24
m 25-27 hold 12

Director Viewpoint

m 28-34 move 28

35 36 37 19 18 17 16 21 20 34 33

47 46 45 44 43 42 41 40 39 38

61 48 49

59 58 57 56 55 54 53 52 51 50

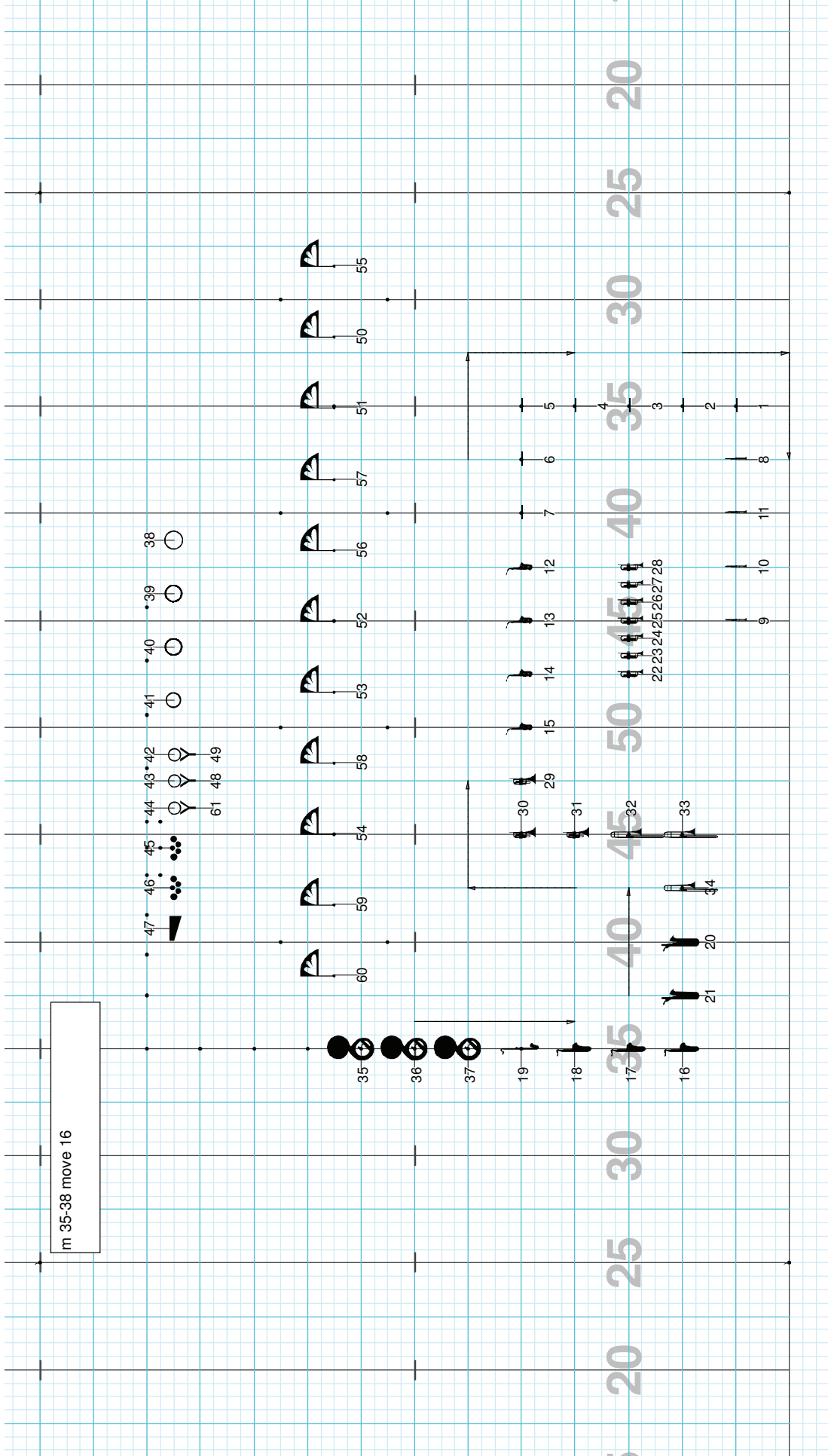
60

1 2 3 4 5 6 7 12 13 14 15

8 10 9

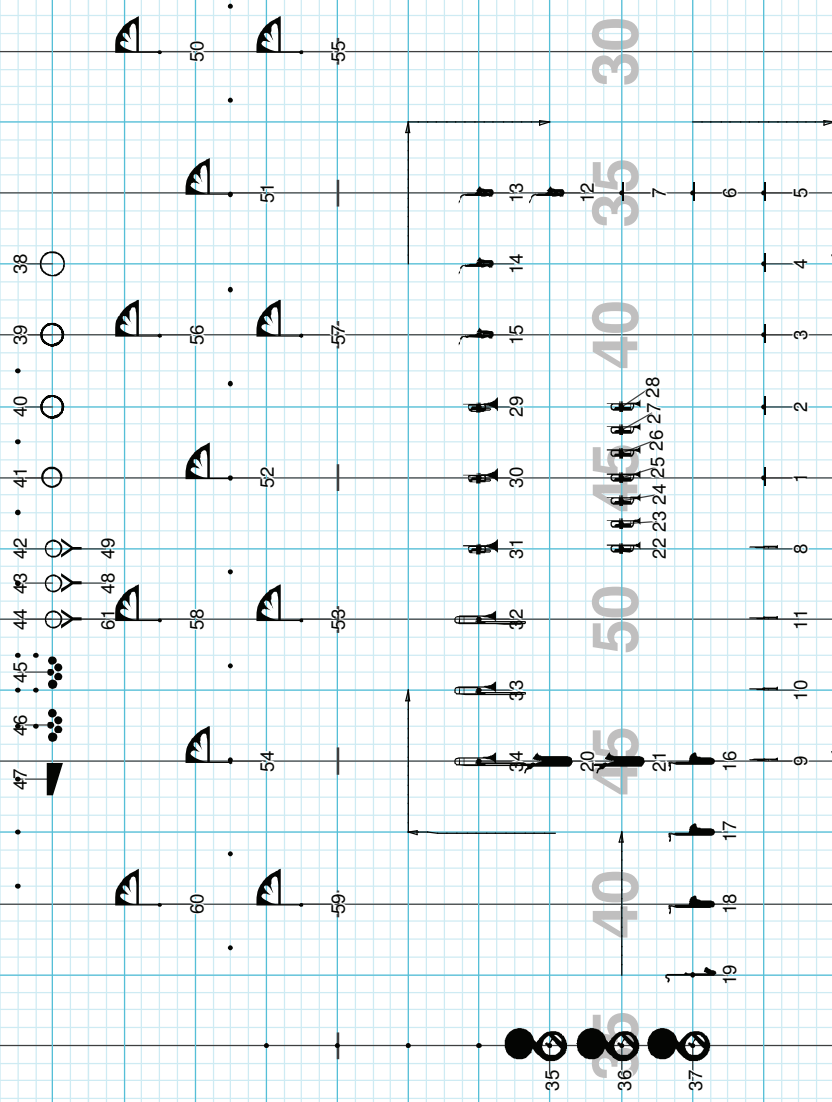
22 23 24 25 26 27 28

Director Viewpoint



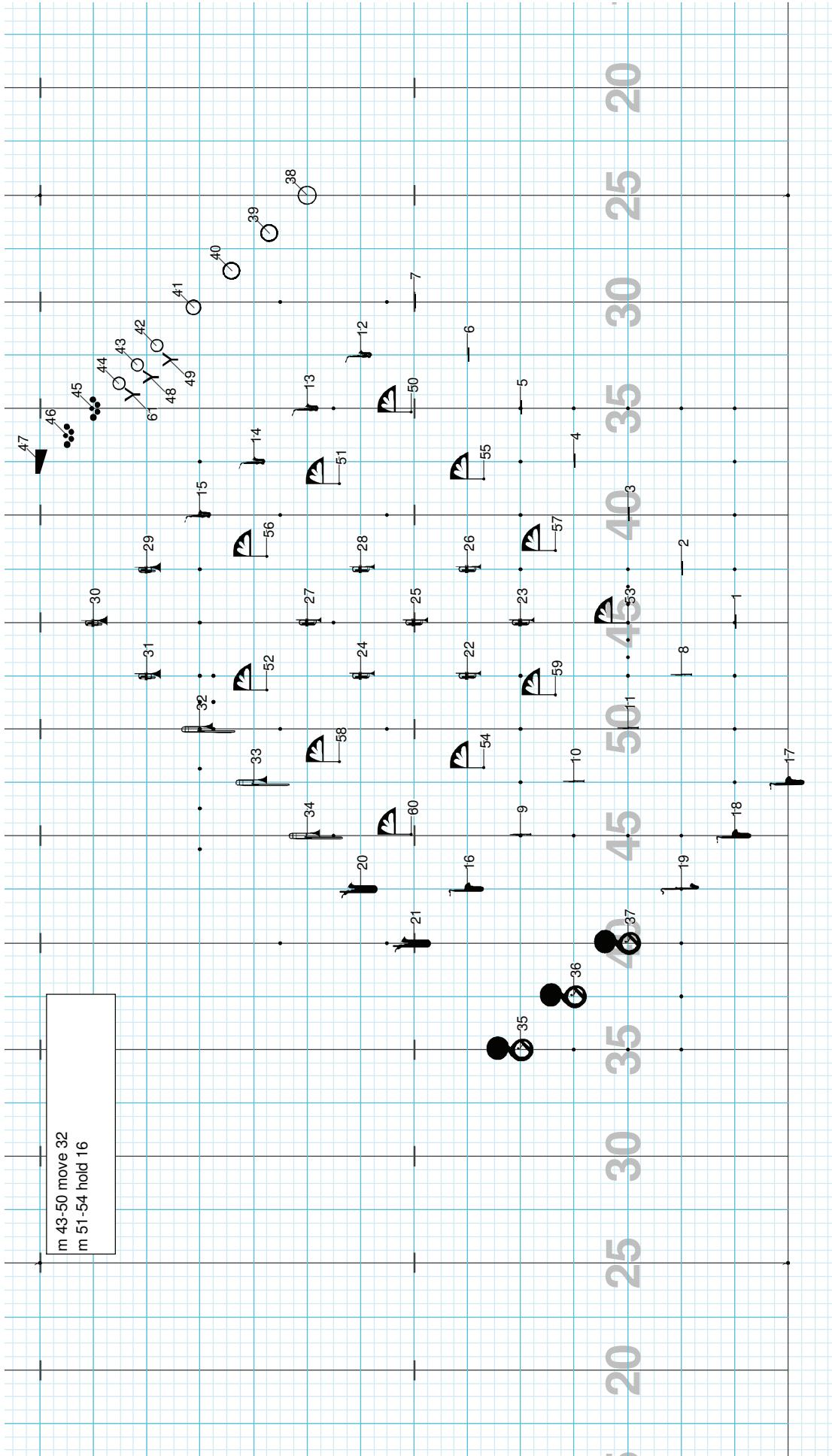
Director Viewpoint

m 39-42 move 16



Director Viewpoint

m 43-50 move 32
m 51-54 hold 16



Director Viewpoint

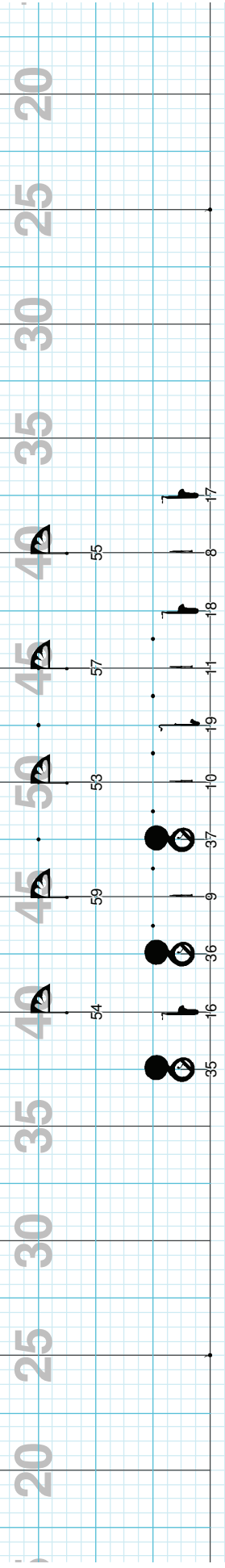
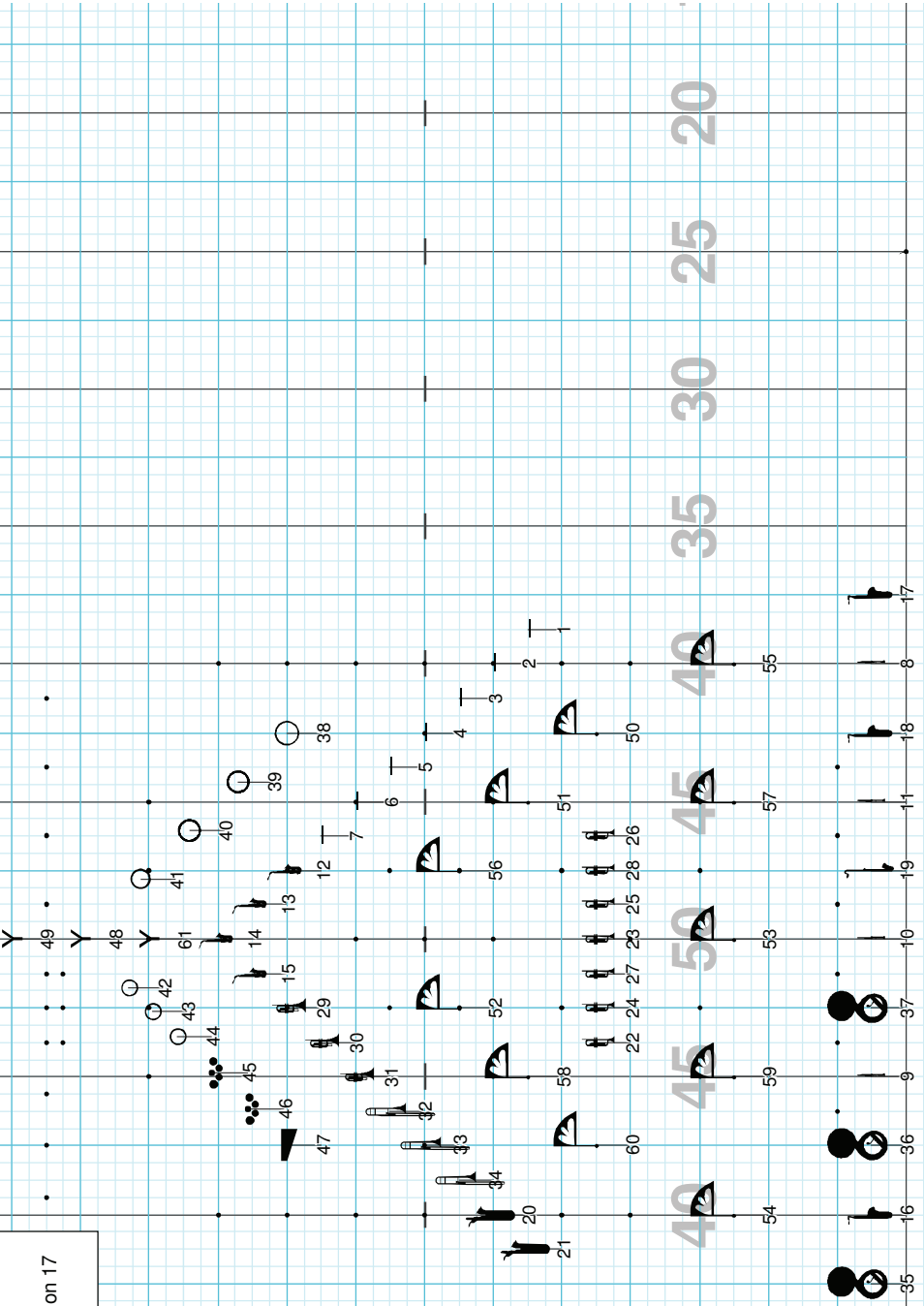
m 55-62 move 32
 1-16 focus front
 17-32 focus back right corner
 m 63-64 hold 8
 left turn to front on 5-8

Director Viewpoint

65-72 move 32
 step half notes
 horns to box on 1
 swagger step
 horns move toward stepping foot

Director Viewpoint

m 73-76 move 16
m 77-83 hold 25
horns to box on 9
horns to box center and foot out on 17



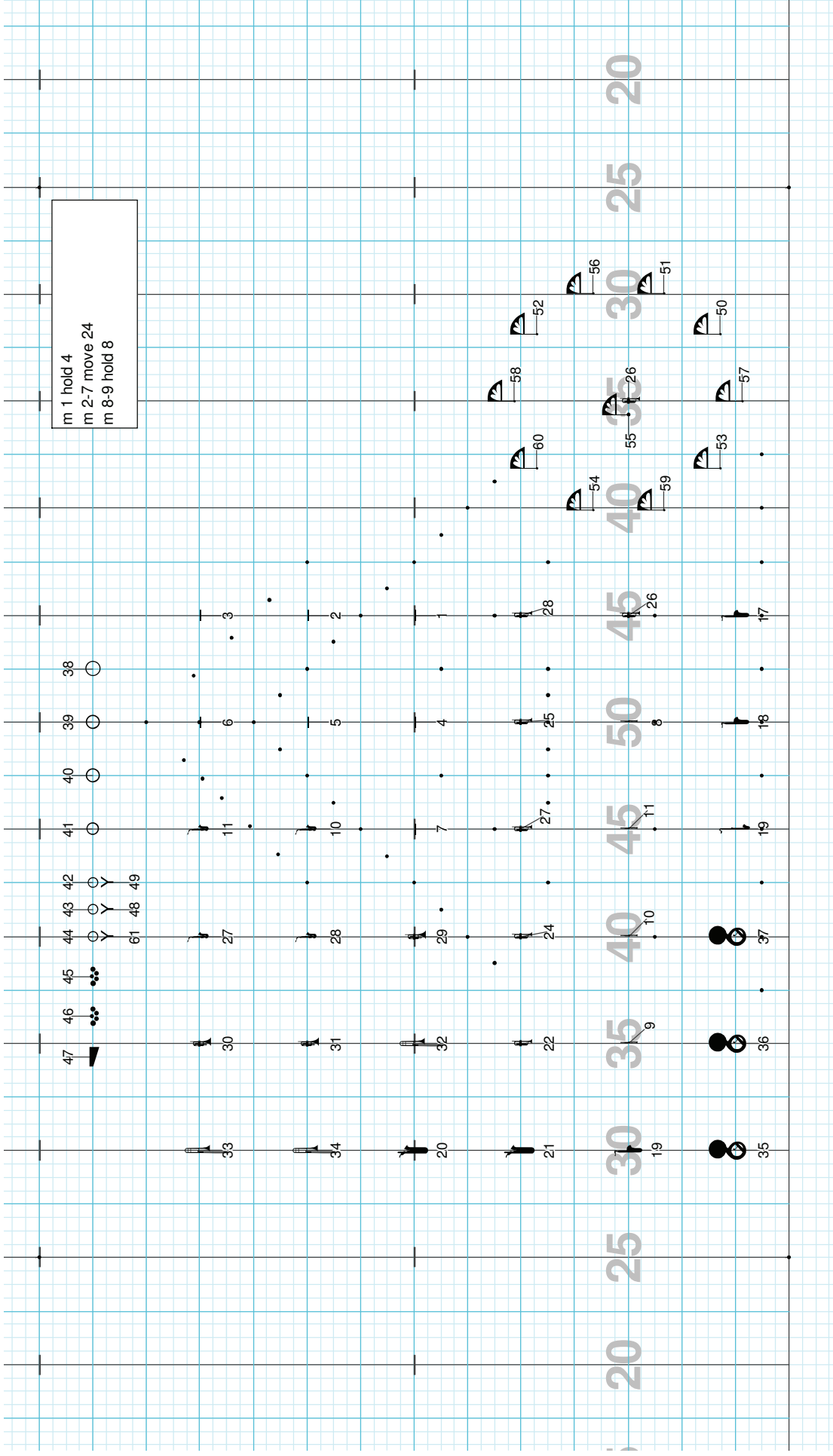
Director Viewpoint

transition page

20 25 30 35 40 45 50 55 60

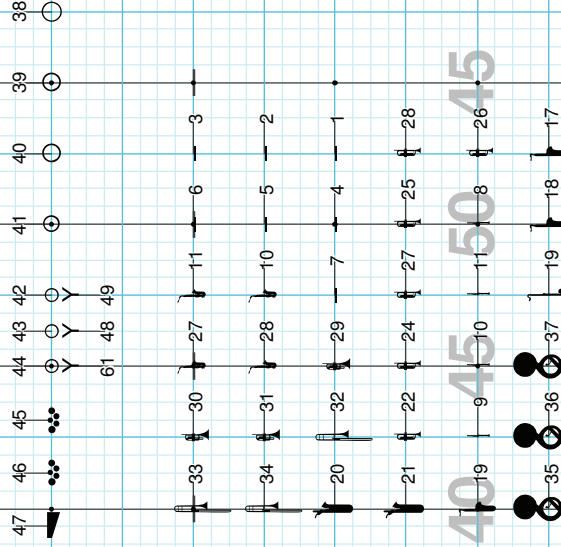
Director Viewpoint

m 1 hold 4
m 2-7 move 24
m 8-9 hold 8



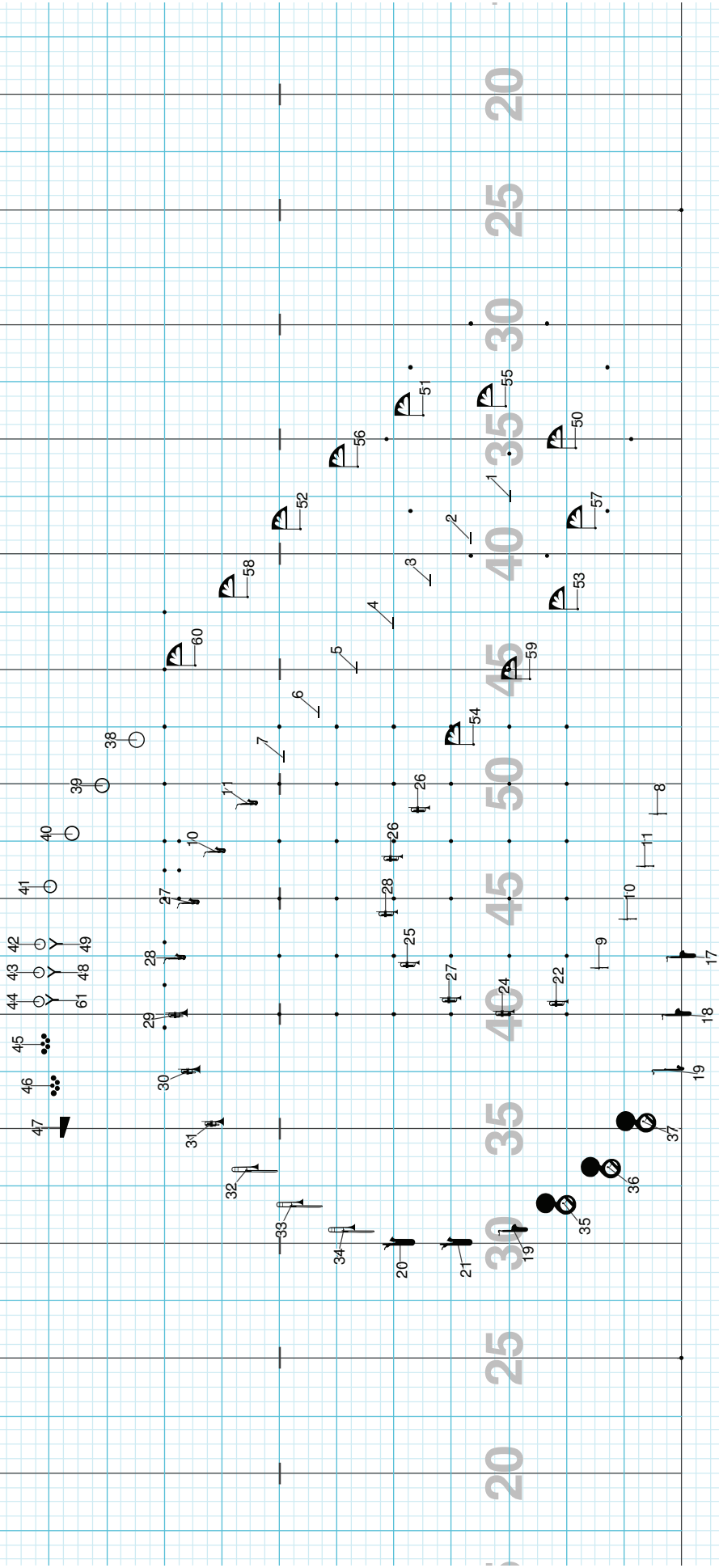
Director Viewpoint

m 10-15 move 24
m 16-19 hold 16



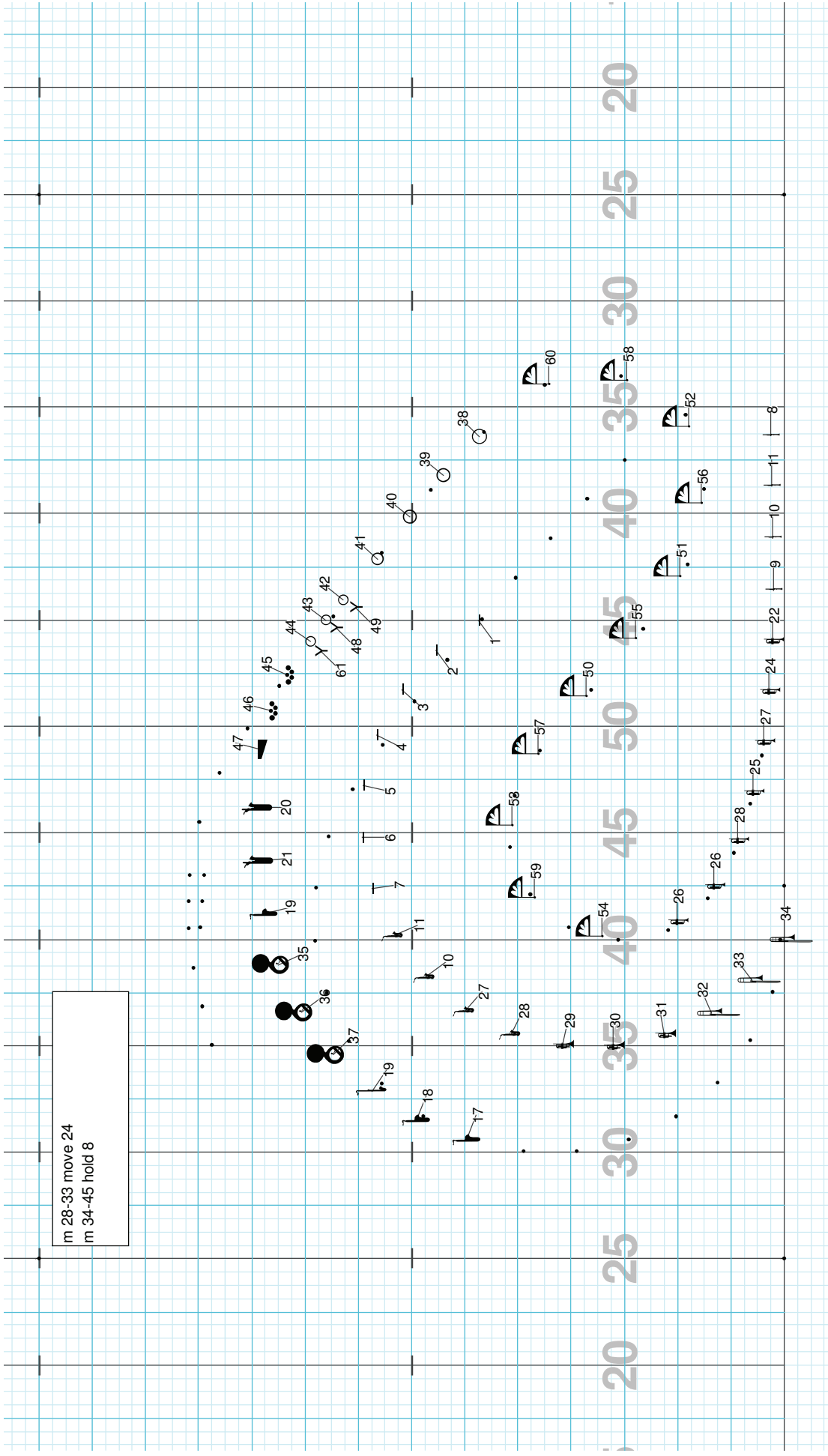
Director Viewpoint

m 20-25 move 24
m 26-27 hold 8



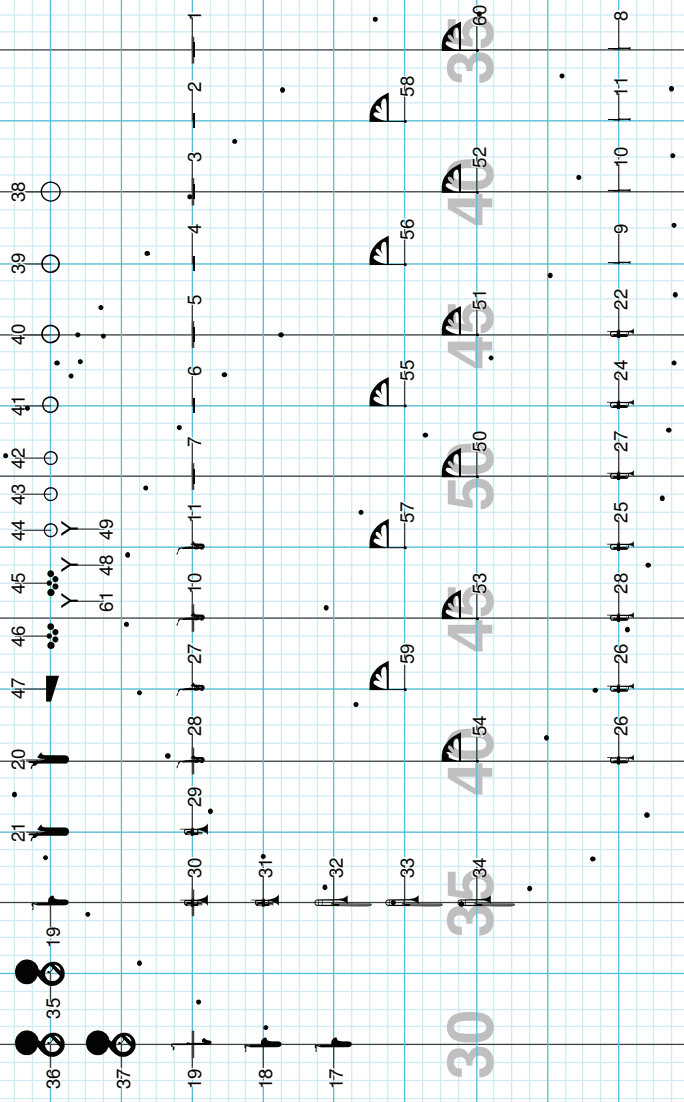
Director Viewpoint

m 28-33 move 24
m 34-45 hold 8



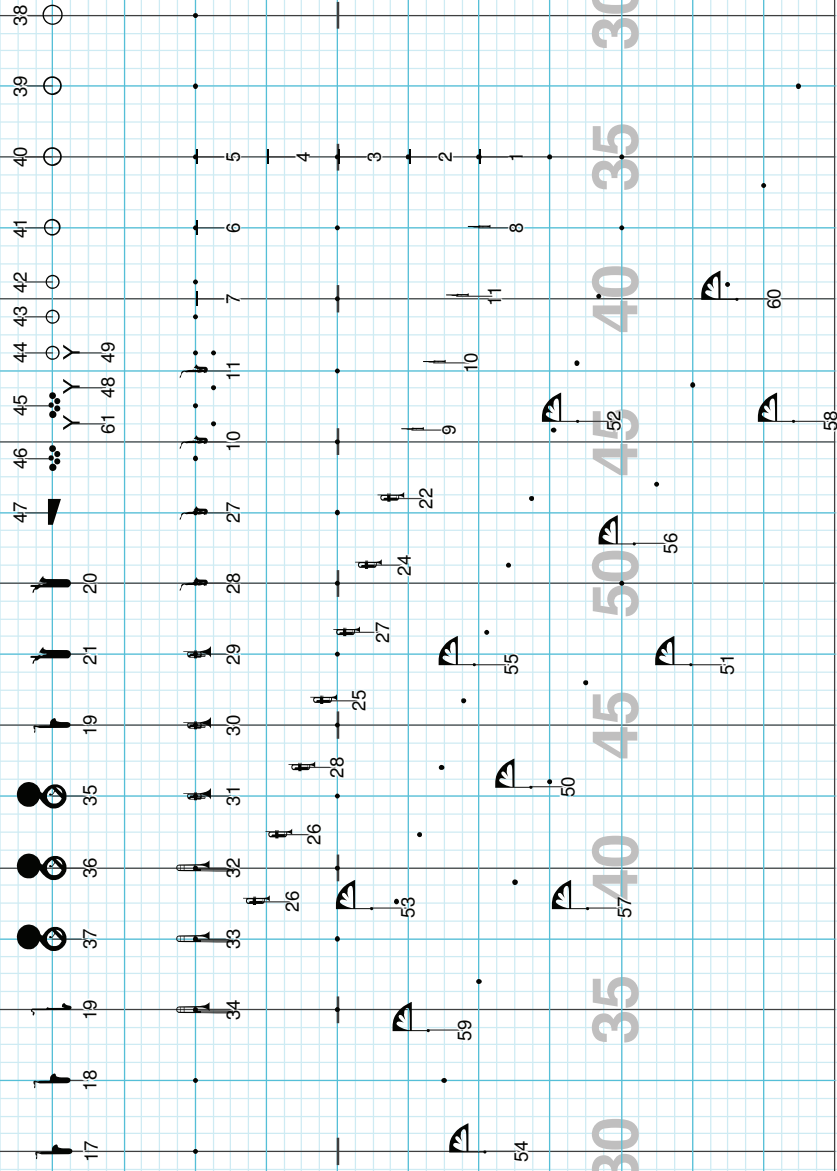
Director Viewpoint

m 36-41 move 24
m 42-43 hold 8



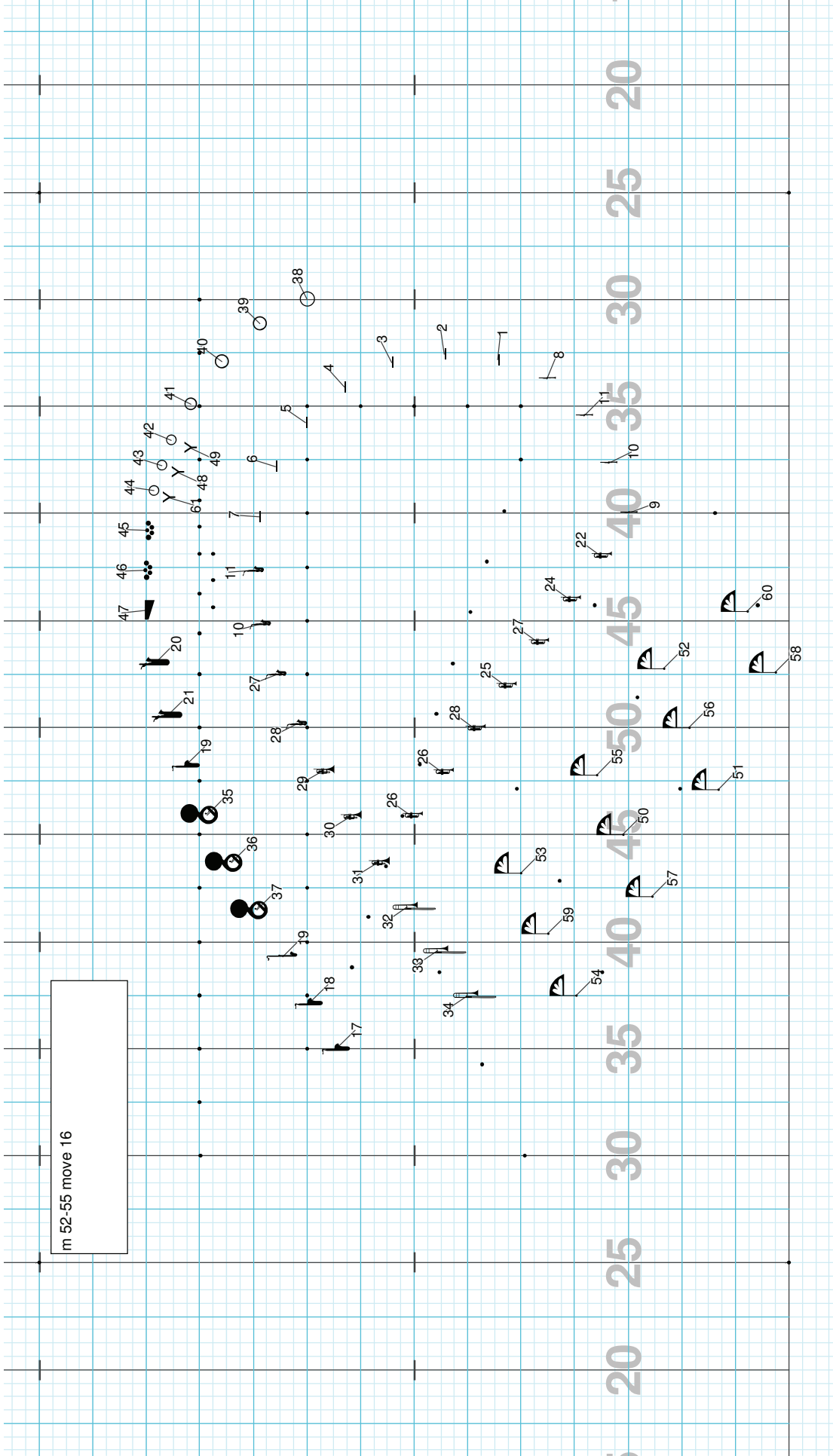
Director Viewpoint

m 48-50 move 12
m 51 hold 4



Director Viewpoint

m 52-55 move 16

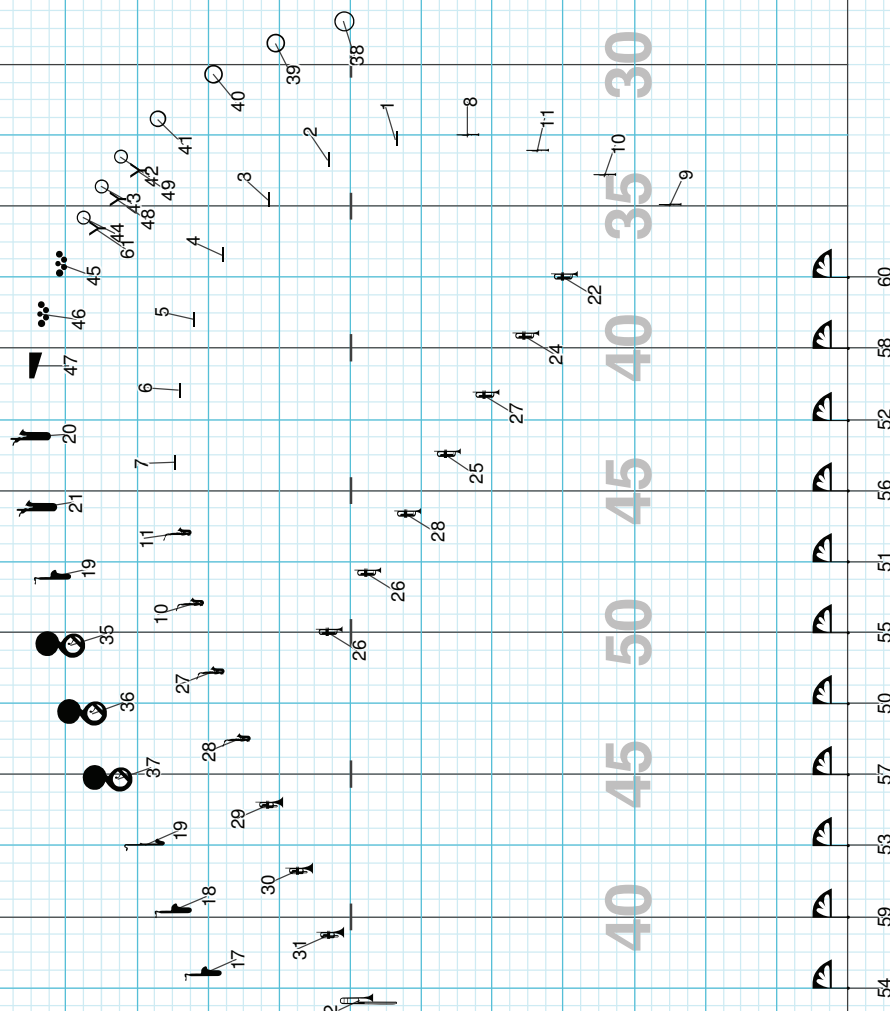


Director Viewpoint

m 56-57 move 8
hold to end of song
foot out horns to box on last chord

Director Viewpoint

transition page



20 25 30 35 40 45 50 55 60

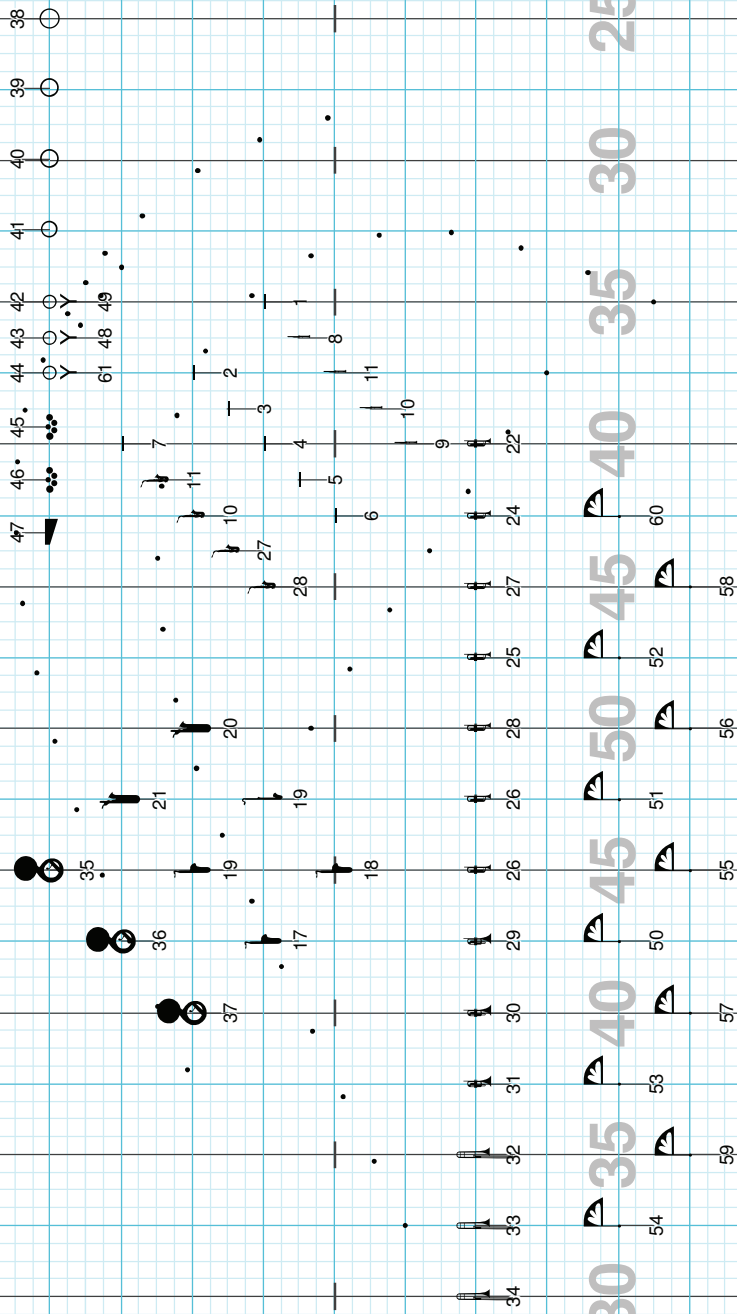
54 59 53 57 50 55 51 56 52 58 60

Director Viewpoint

Drill: Colony 2009-4 Watermelon Man

Set #2 Count: 32

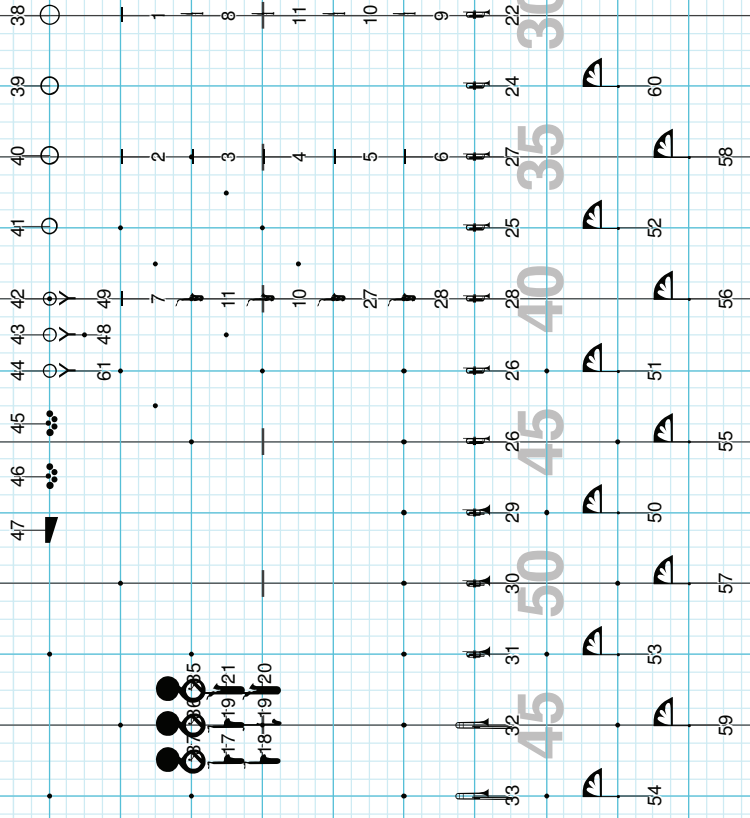
m 1-4 hold 16
m 5-8 move 16



20 25 30 35 40 45 50 55 60

Director Viewpoint

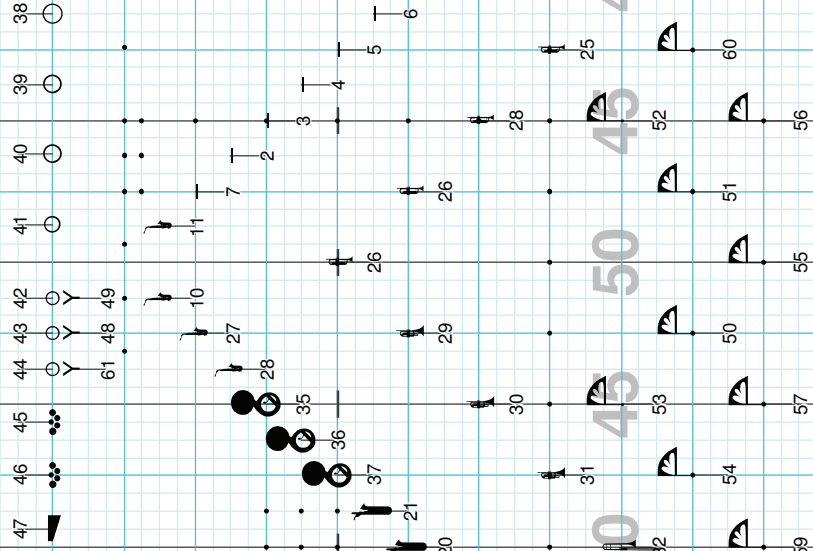
m 9-12 move 16



20 25 30 35 40 45 50 55 60
20 25 30 35 40 45 50 55 60

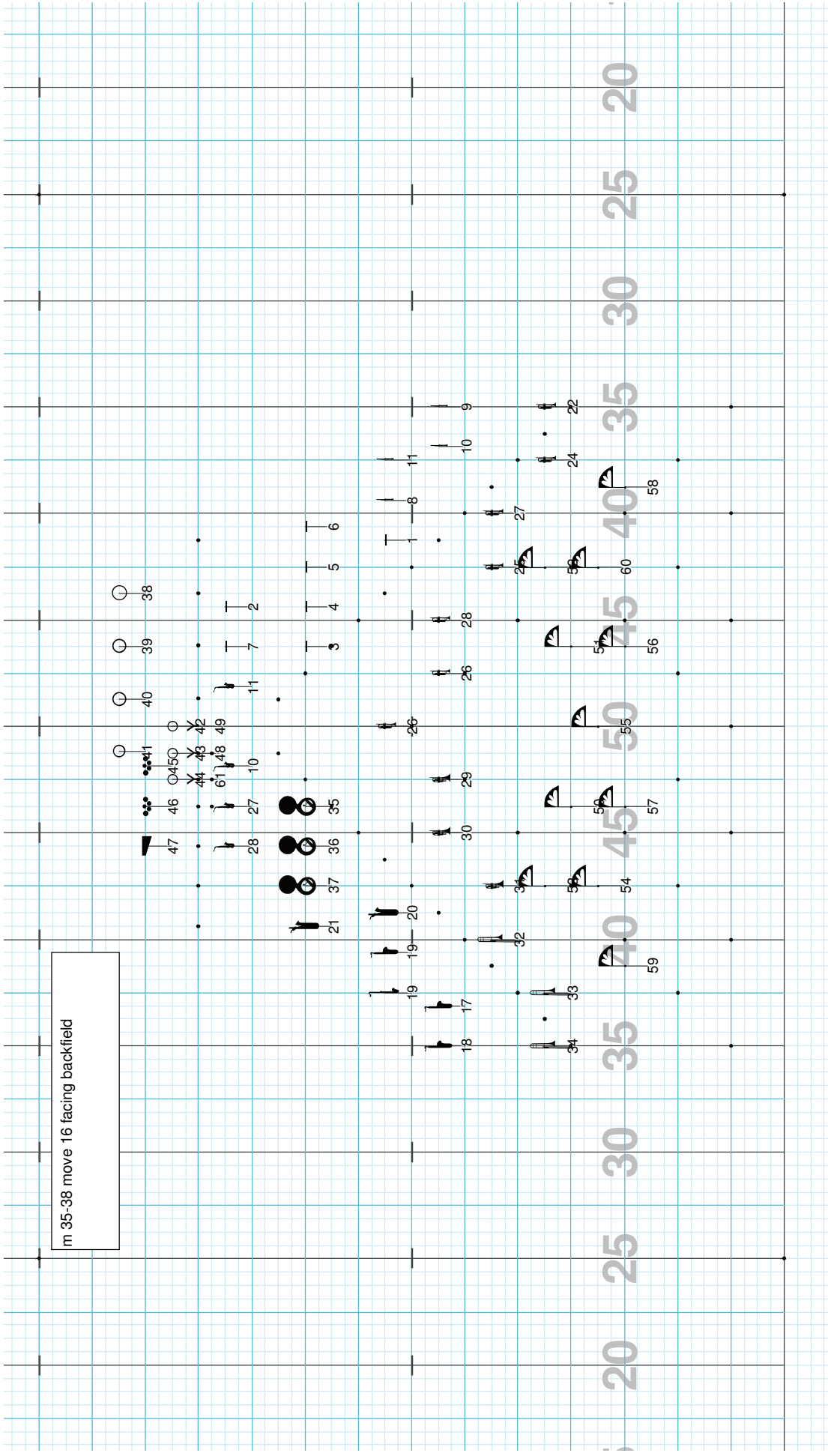
Director Viewpoint

m 29-33 move 20
m 34 4 count right 180



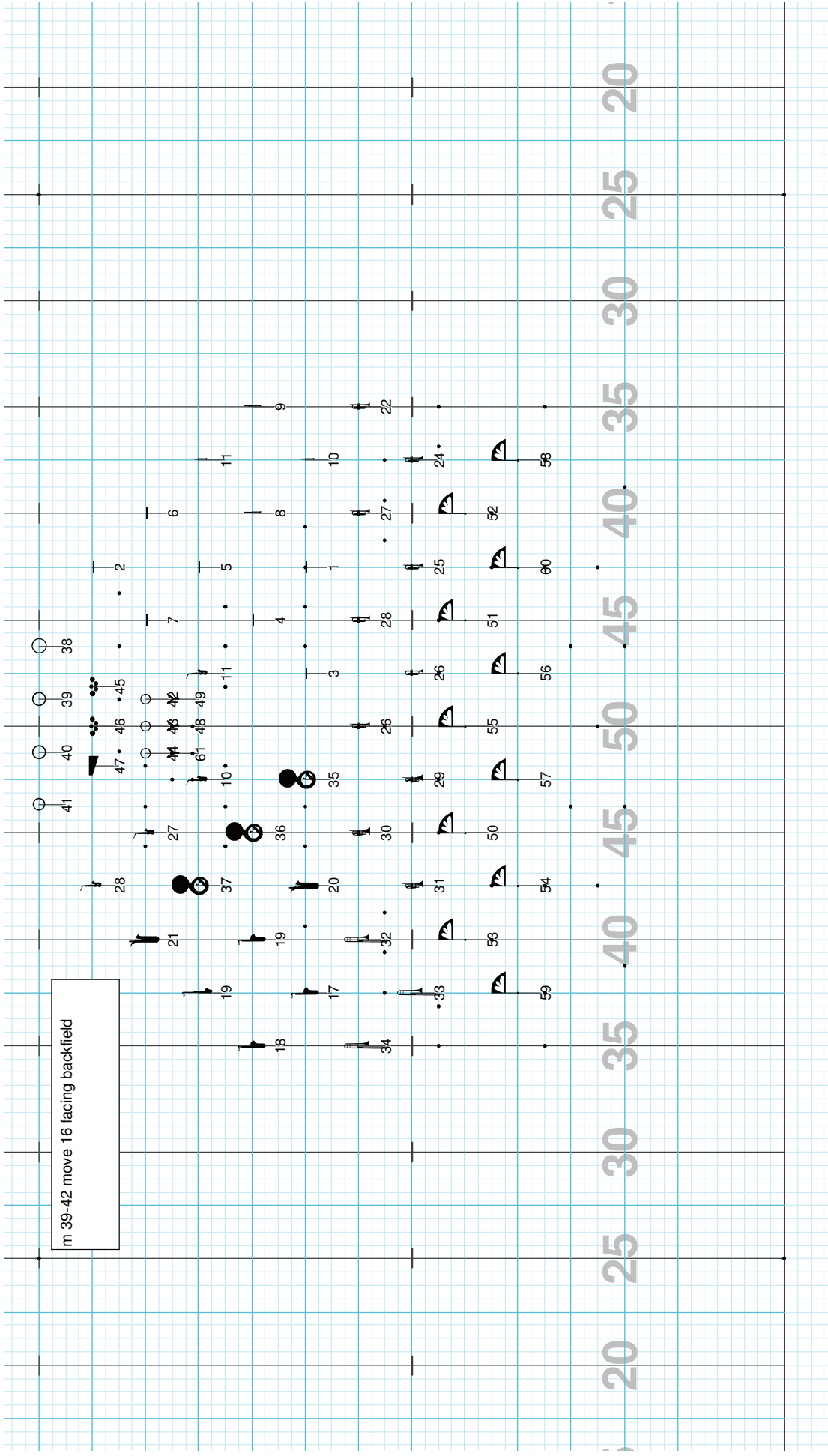
Director Viewpoint

m 35-38 move 16 facing backfield



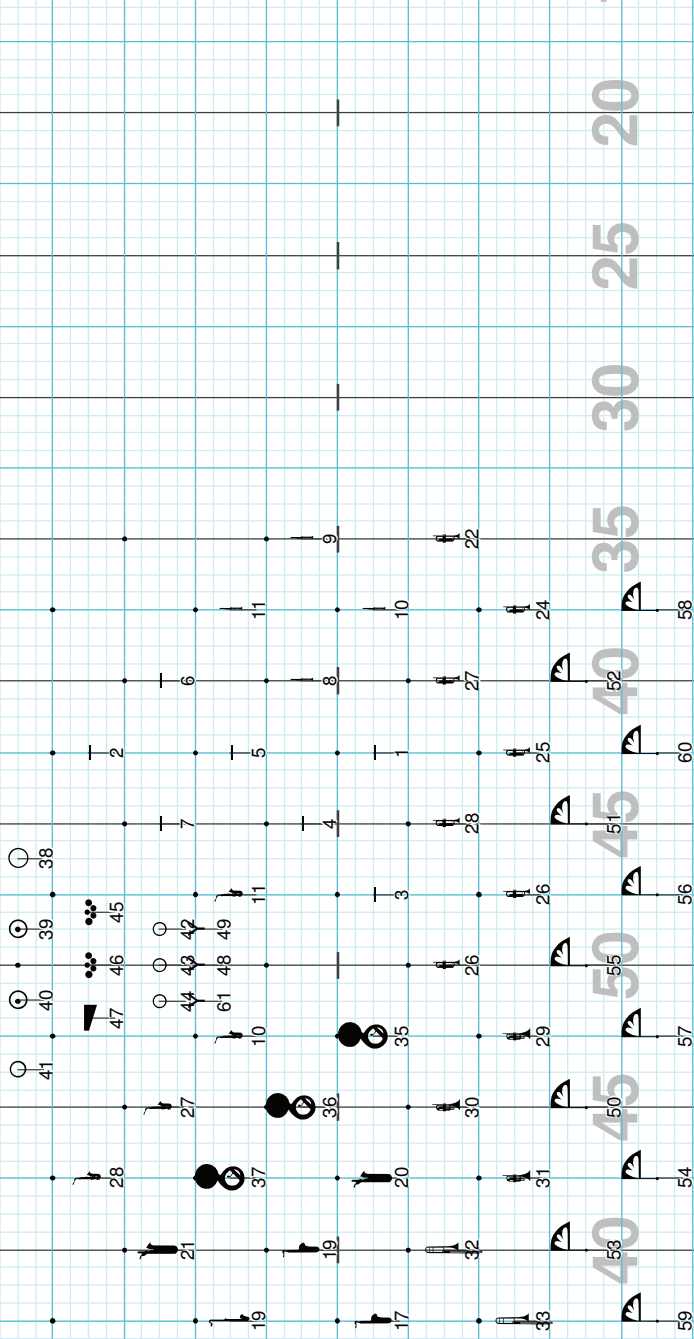
Director Viewpoint

m 39-42 move 16 facing backfield



Director Viewpoint

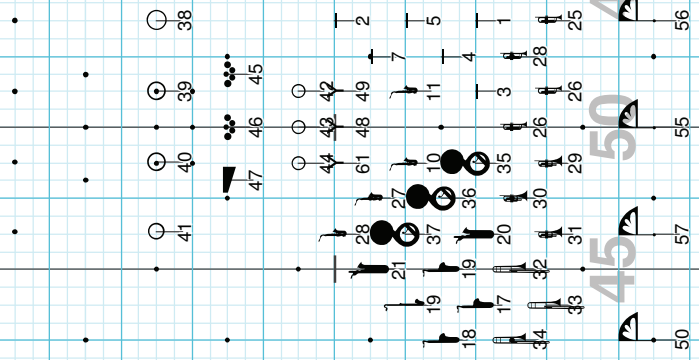
m 43-47 move 20 (10 half time swagger
steps)
flank to front on 1
horns to box on 1
m 48 MT 4



20 25 30 35 40 45 50 55 60 65 70 75 80 85 90 95 100

Director Viewpoint

m 49-52 move 16
horns to level on 1



20 25 30 35 40 45 50 55 60 65 70 75 80 85 90 95 100

Director Viewpoint

