

Drill: Granite Hills 2009-1 Halo

Set #2 Count: 38

m 1-7 count 2 hold 26
if singing, open mouth as wide as possible
m 7c3-9 move 12

The grid contains the following elements:

- Points 27, 28, 29: Circles.
- Points 30, 31, 32, 33: Squares.
- Points 34, 35, 36, 37, 38, 39, 40, 41: Triangles.
- Points 42-46: A box containing 'Y' characters.
- Points 1-22: A sequence of notes and rests.
- Points 23-26: A sequence of notes and rests.
- Watermark: 20 25 30 35 40 45 50 20 25 30 35 40 45 20

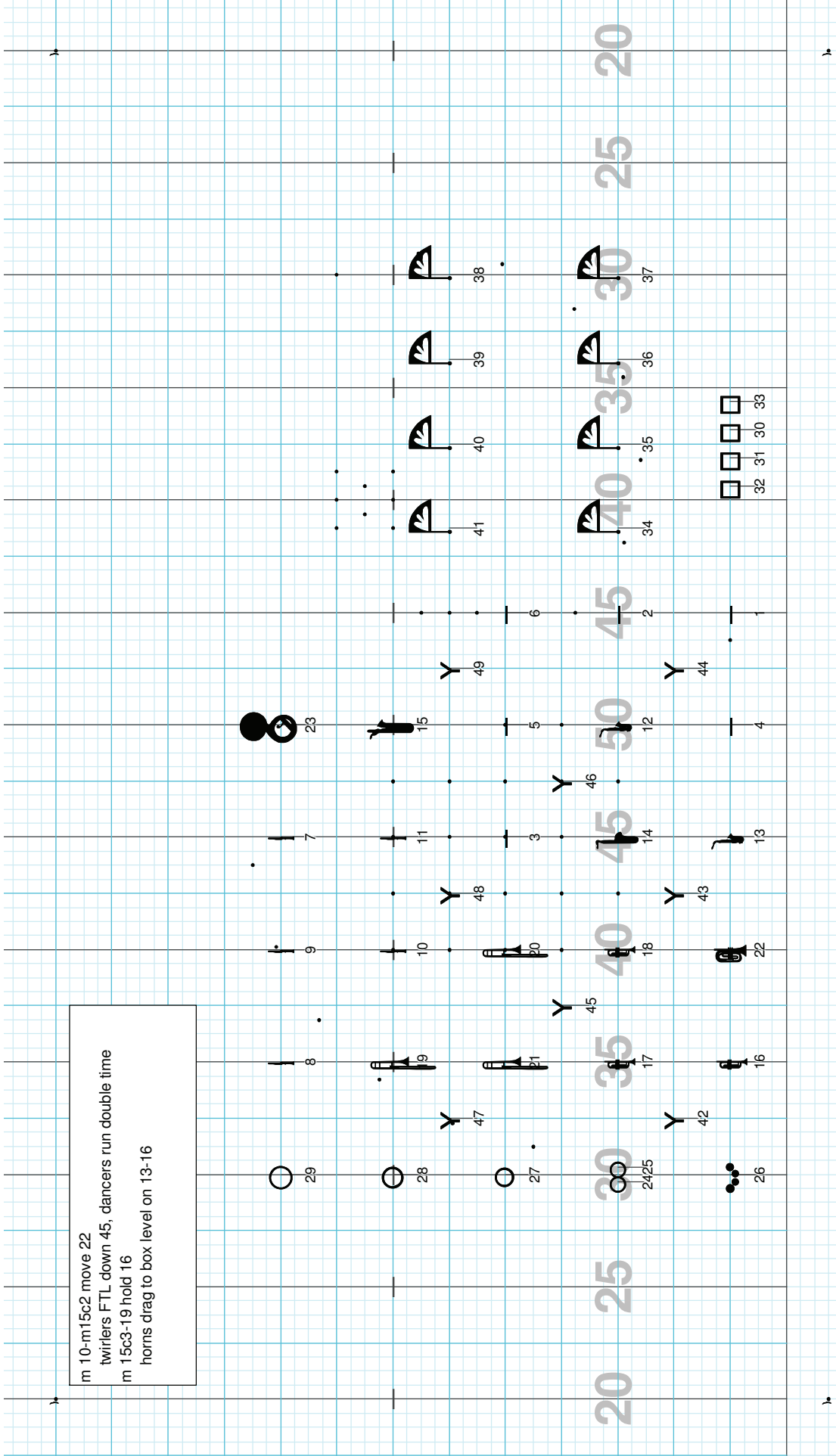
Director Viewpoint

Licensed to: Victor Neves
Created on Pyware 3D.

Drill: Granite Hills 2009-1 Halo

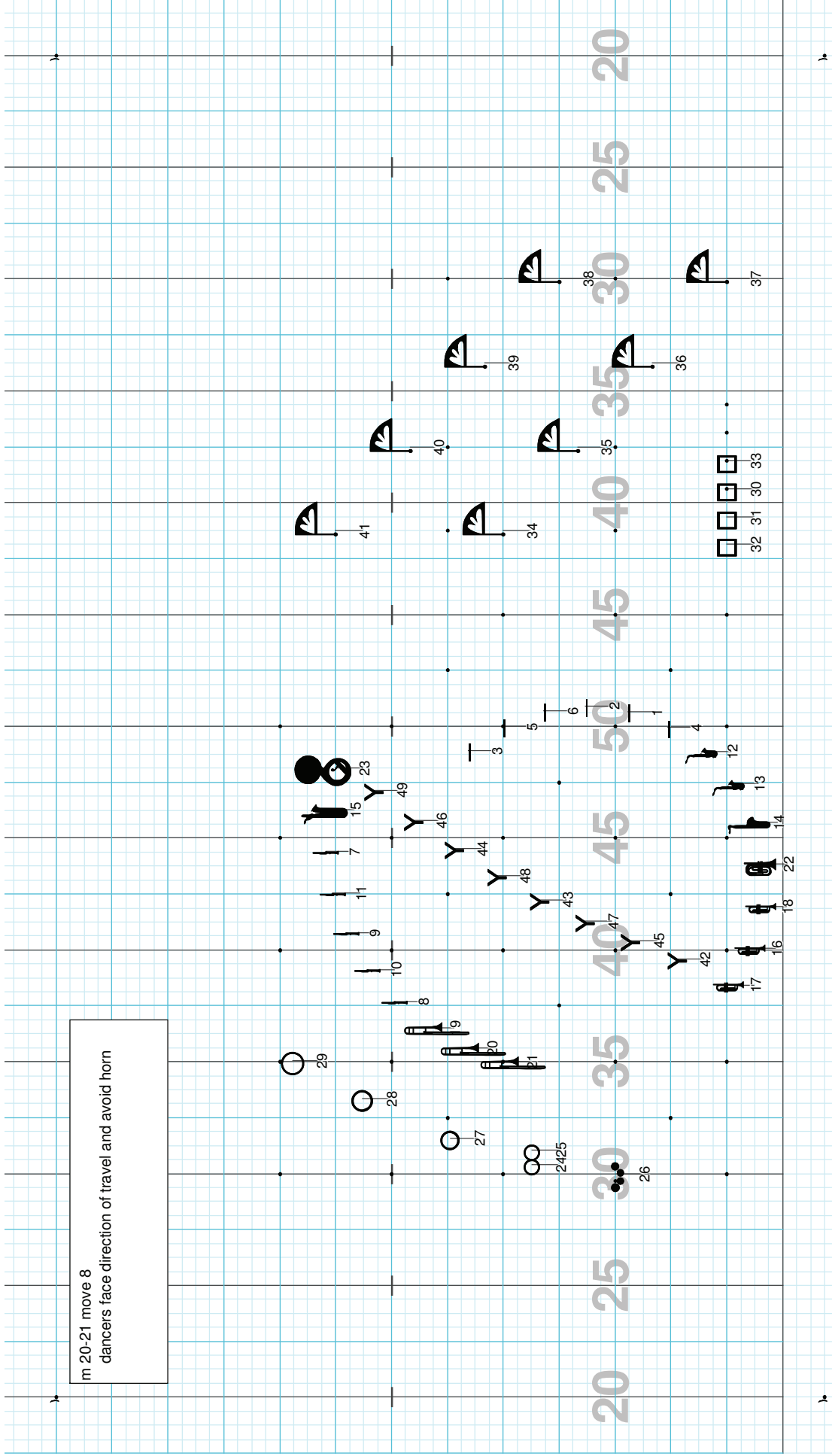
Set #3 Count: 60

m 10-m15c2 move 22
twirlers FTL down 45, dancers run double time
m 15c3-19 hold 16
horns drag to box level on 13-16



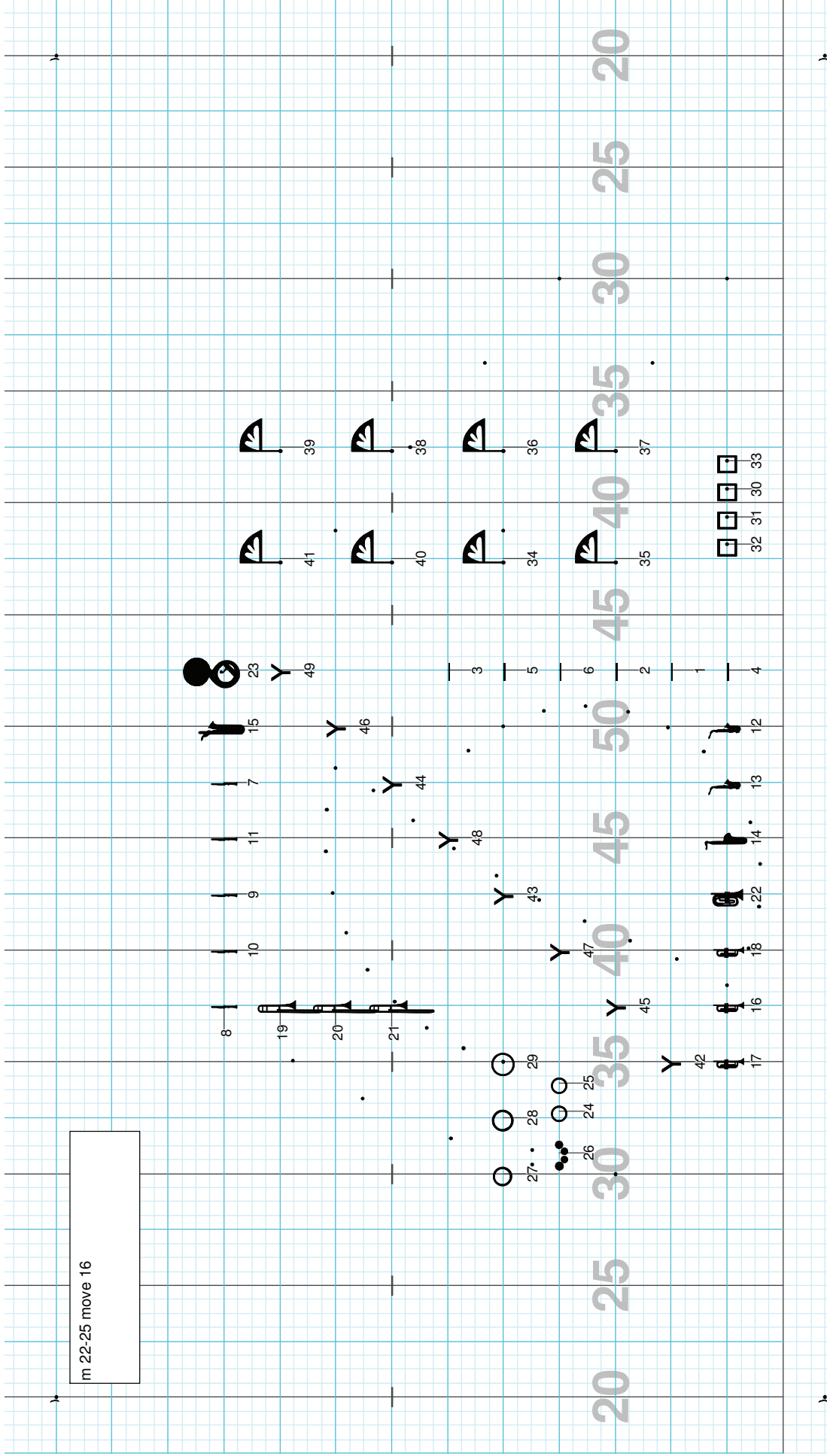
Director Viewpoint

m 20-21 move 8
dancers face direction of travel and avoid horn



Director Viewpoint

m 22-25 move 16



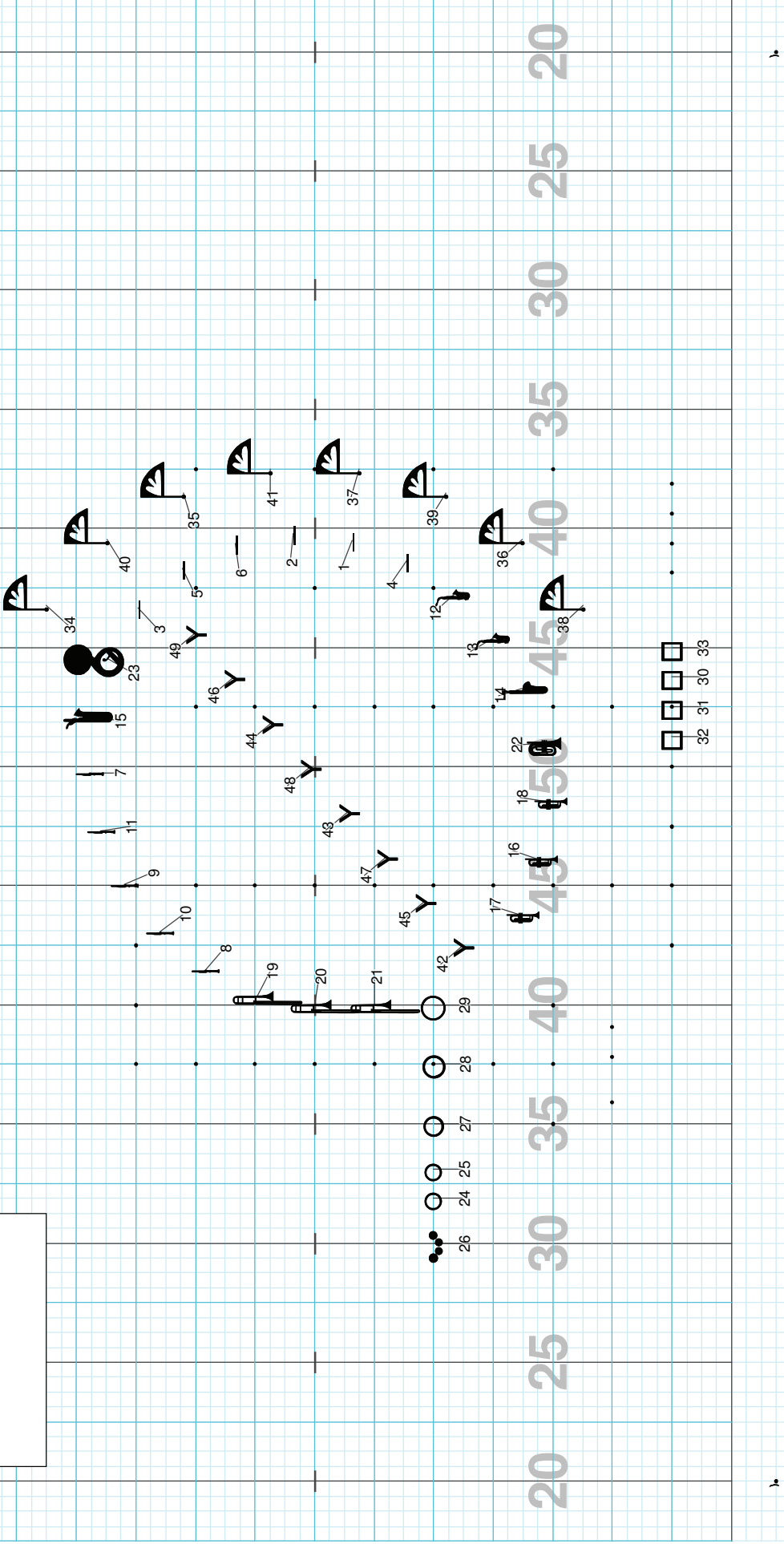
Director Viewpoint

m 26-28 move 12
m 29 hold 4, 30-31 hold 8
horns drag up, hold, drag down

The grid contains musical notation for a drill. The notation is organized into several rows and columns. The first row contains measures 1-11, 15-23, 27-31, and 35-39. The second row contains measures 12-14, 18-22, 26-30, and 34-38. The third row contains measures 1-4, 8-11, 15-18, and 22-25. The fourth row contains measures 5-7, 12-14, 18-21, and 25-28. The fifth row contains measures 9-11, 15-17, 21-23, and 27-29. The sixth row contains measures 13-15, 19-21, 23-25, and 29-31. The seventh row contains measures 16-18, 20-22, 24-26, and 30-32. The eighth row contains measures 19-21, 23-25, 27-29, and 31-33. The ninth row contains measures 22-24, 26-28, 30-32, and 34-36. The tenth row contains measures 25-27, 29-31, 33-35, and 37-39. The numbers 20, 25, 30, 35, 40, 45, 50 are repeated across the bottom of the grid.

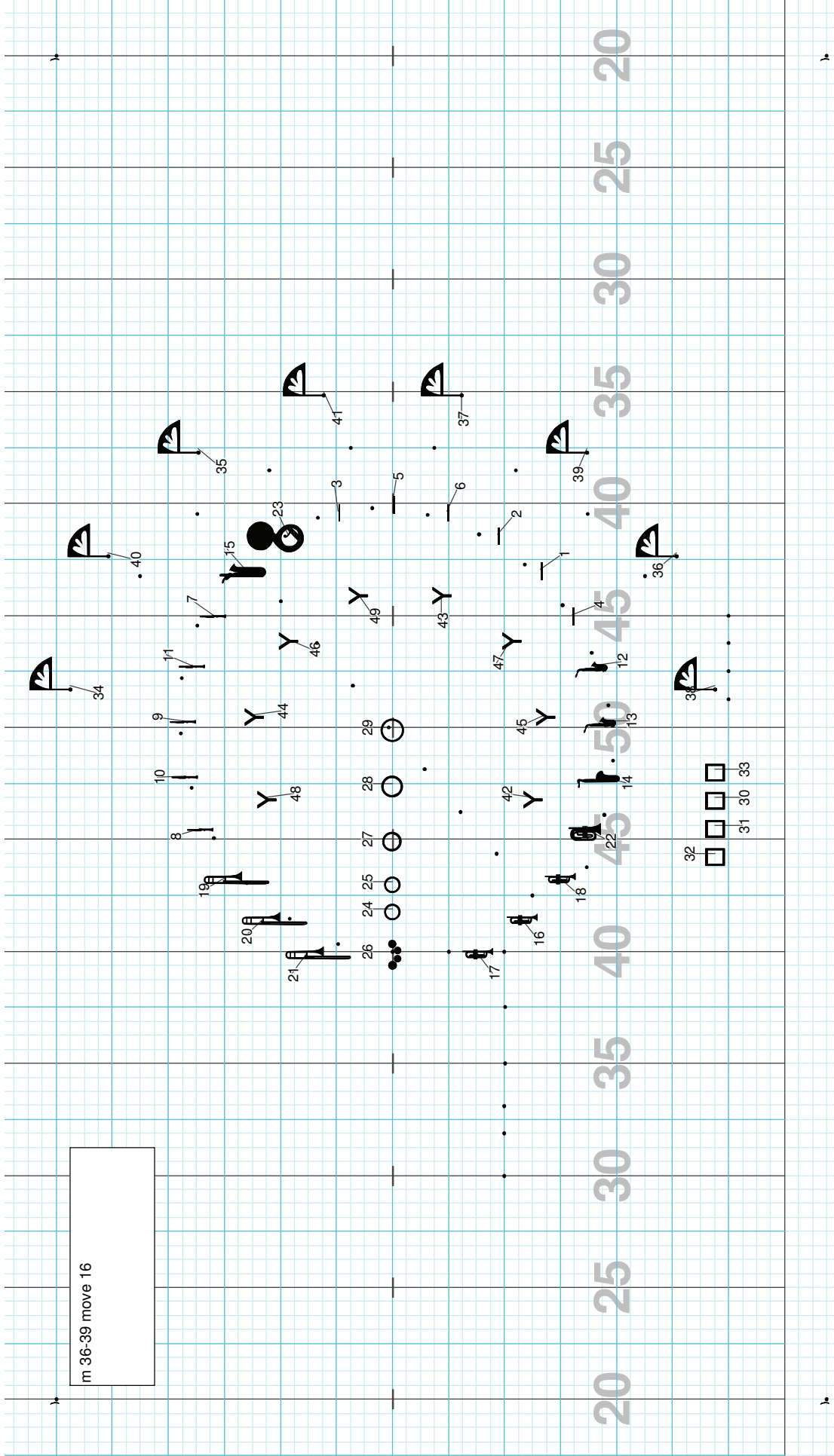
Director Viewpoint

m 32-35 move 16



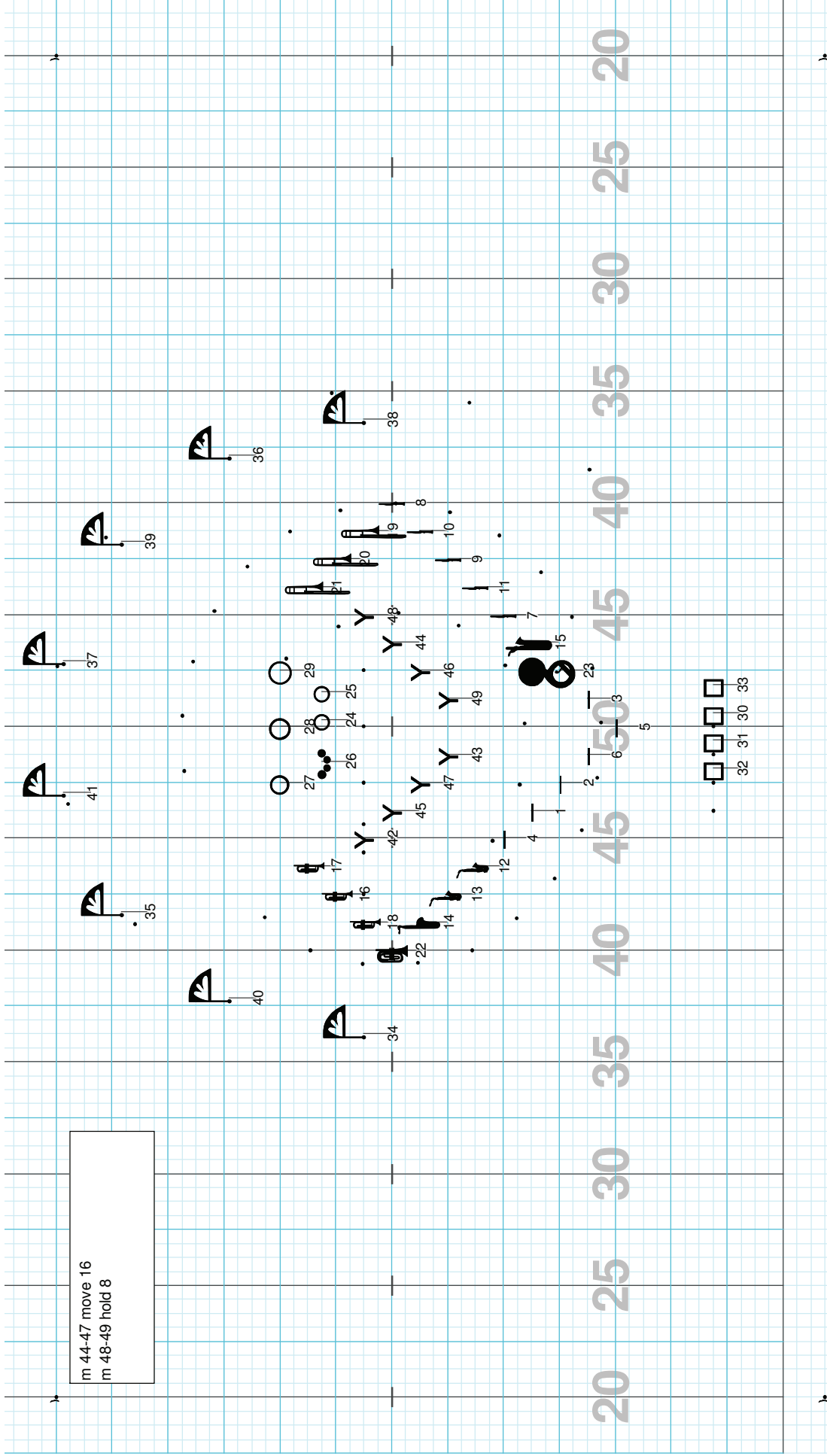
Director Viewpoint

m 36-39 move 16



Director Viewpoint

m 44-47 move 16
m 48-49 hold 8



Director Viewpoint

m 50-53 move 16



26

24

25

27

28

29

37



35



40



34



37



39



36



38

17

16

18

22

48

44

46

49

43

47

45

42

14

13

12

4

1

2

6

5

3

23

15

7

11

9

10

21

20

19

8

32

31

30

33

20

25

30

35

40

45

50

45

40

35

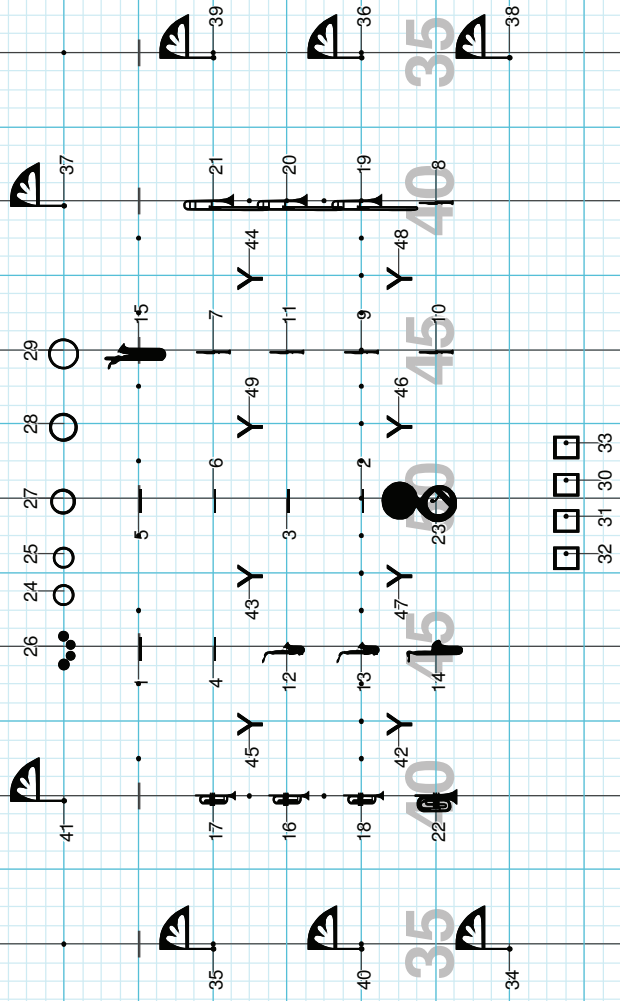
30

25

20

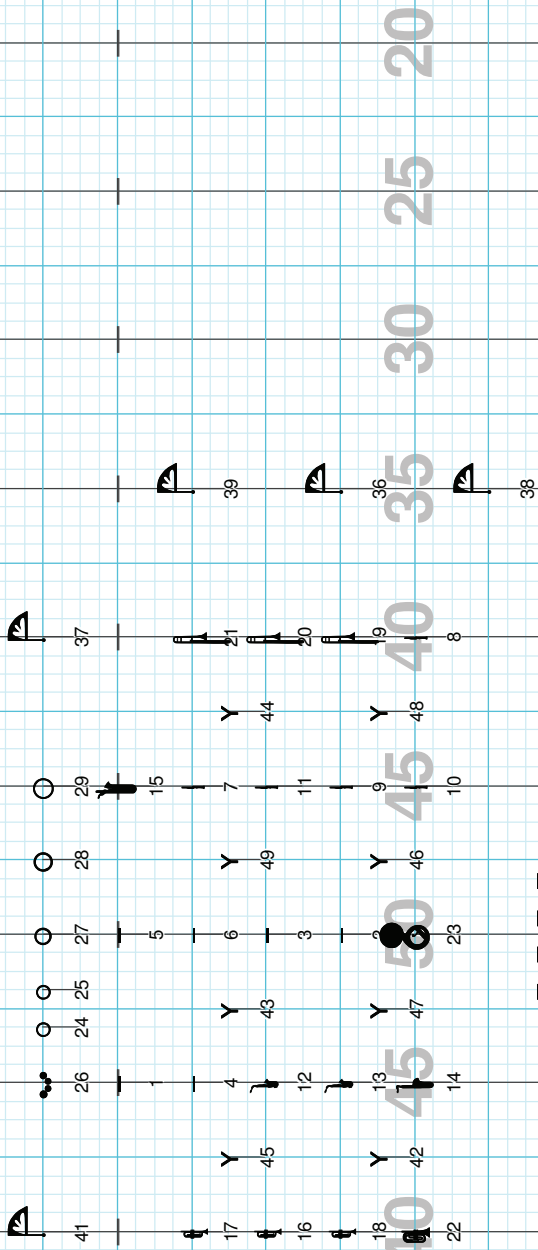
Director Viewpoint

m 54-57 move 16
 m 58-59 hold 8
 horns flash to drum major on 2, hold 3-4
 horns drag to front on 5-8
 m 60-61 hold 5
 foot out, horns to box on 1



Director Viewpoint

transition page

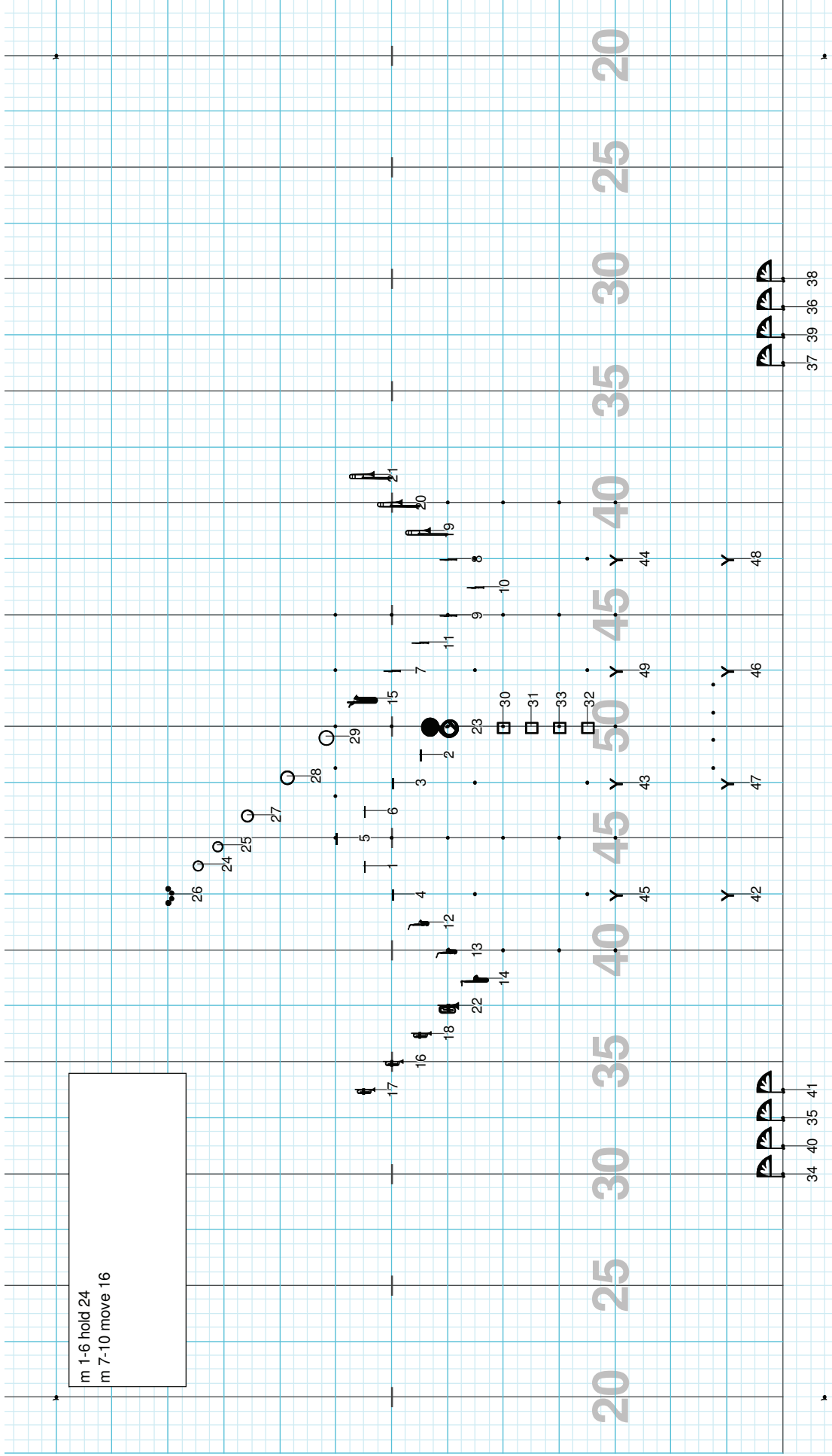


Director Viewpoint

Drill: Granie Hills 2009-2 Bounty Hunter

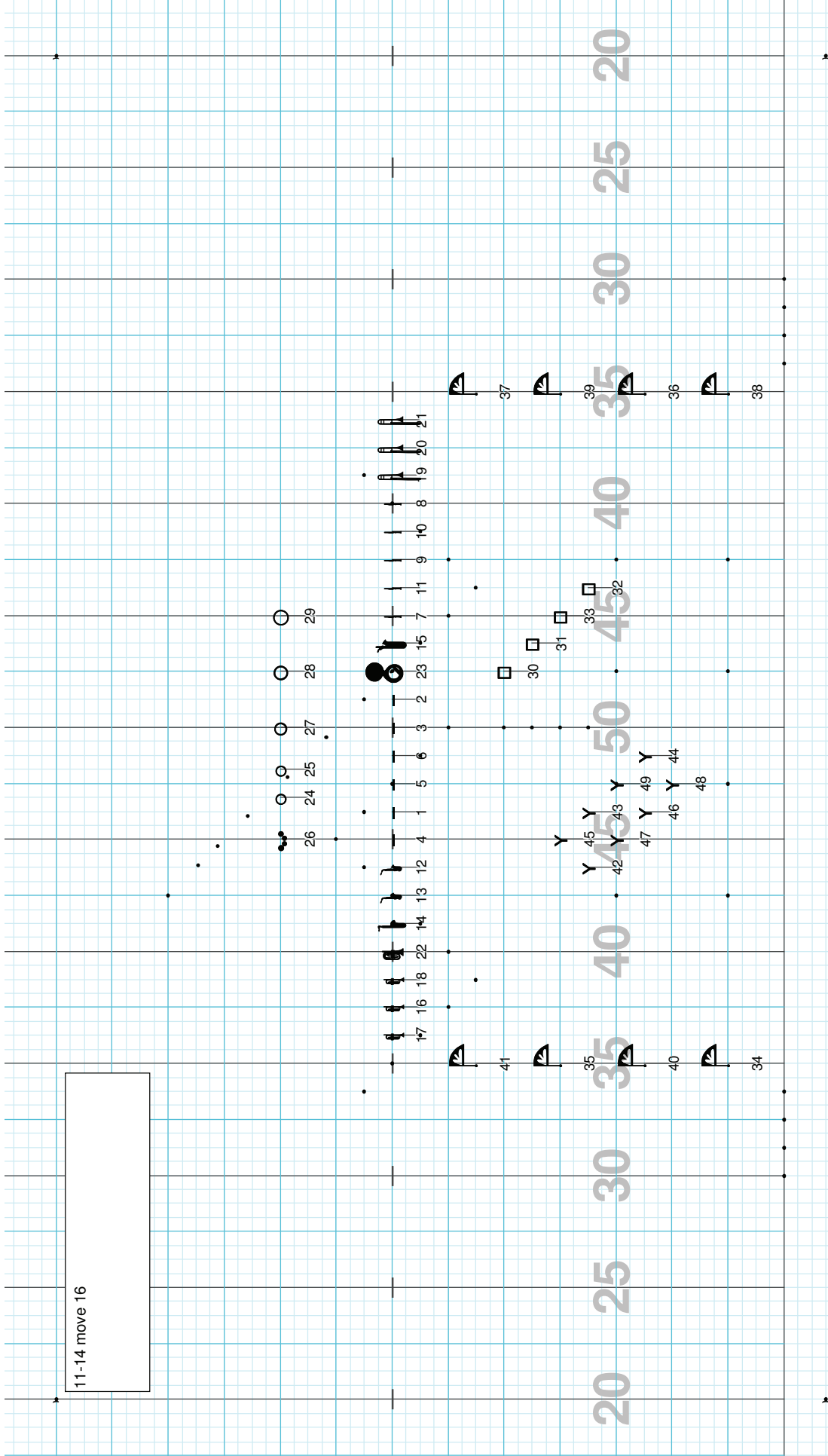
Set #2 Count: 40

m 1-6 hold 24
m 7-10 move 16



Director Viewpoint

11-14 move 16

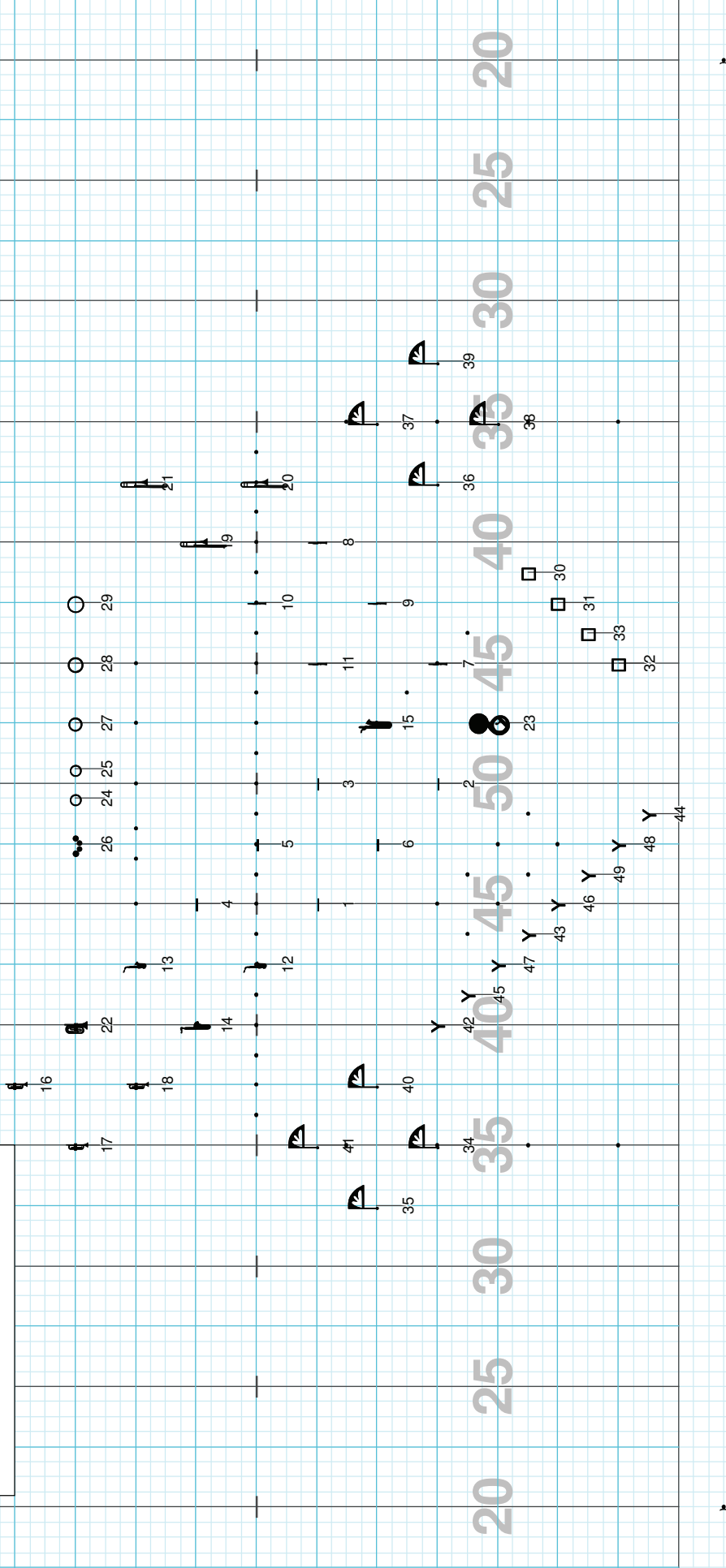


Director Viewpoint

Drill: Granie Hills 2009-2 Bounty Hunter

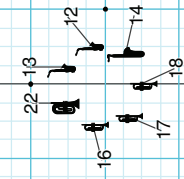
Set #4 Count: 88

m 15-22 move 32
m 23-30 hold 32
twirler and dance positions approx.



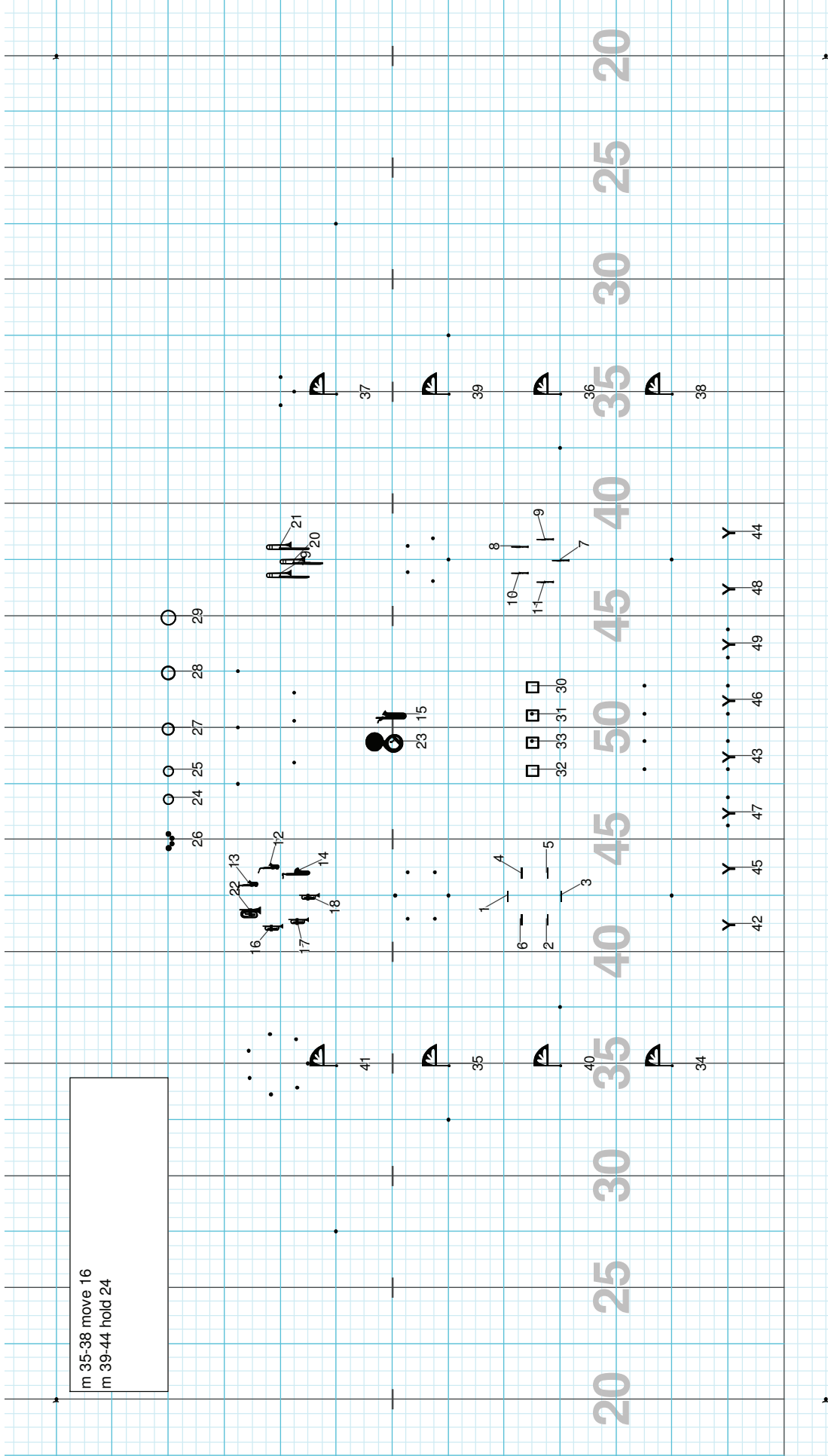
Director Viewpoint

m 31-34 move 16



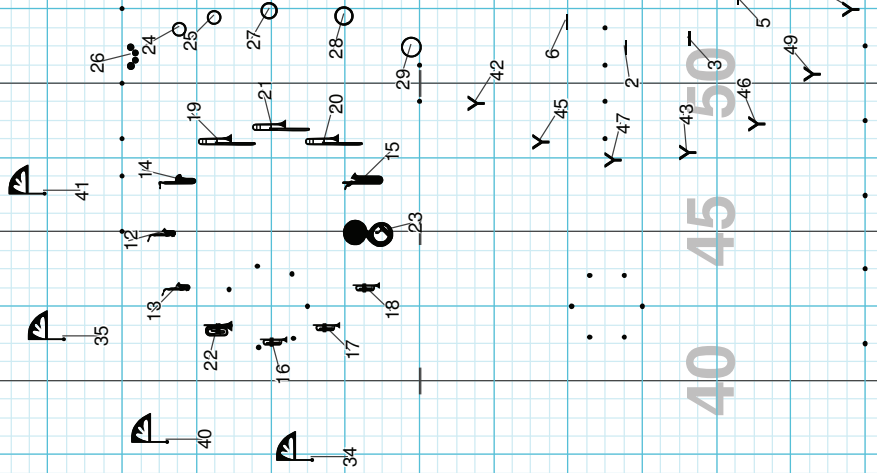
20 25 30 35 40 45 50 55 60 65 70

m 35-38 move 16
m 39-44 hold 24



Director Viewpoint

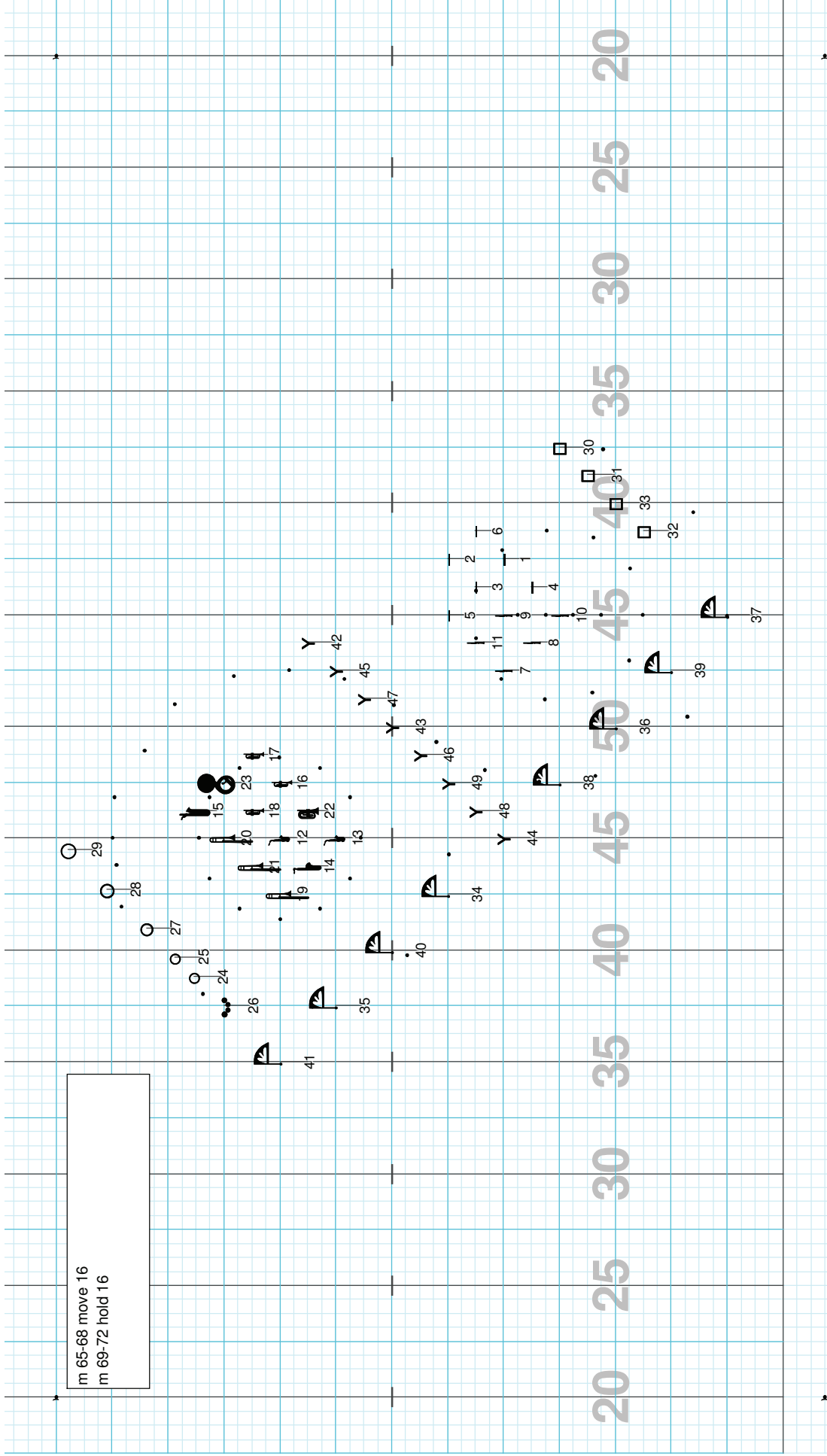
45-52 move 32



20 25 30 35 40 45 50 55 60 65 70 75 80 85 90 95 100

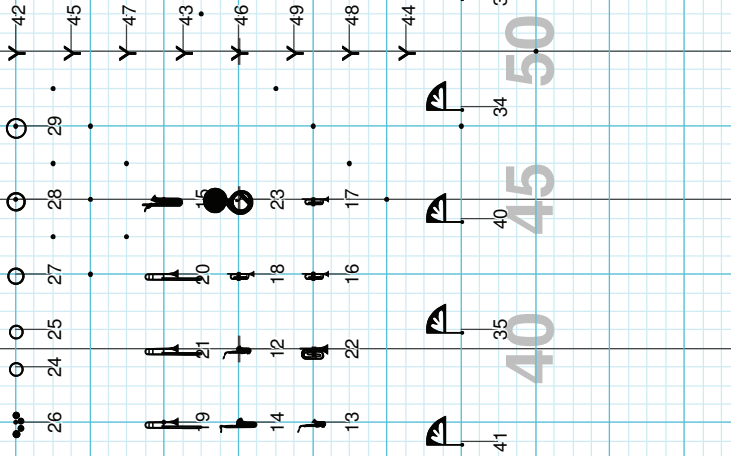
Director Viewpoint

m 65-68 move 16
m 69-72 hold 16



Director Viewpoint

m 73-76 move 16
m 77 hold (horns flash to box)



20 25 30 35 40 45 50 55 60 65 70 75 80 85 90 95 100

Director Viewpoint

transition page

26

24

25

27

28

29

42

45

47

43

46

49

48

44

15

23

17

20

18

16

21

12

22

19

14

13

11

9

4

5

3

1

2

6

41

35

40

34

38

36

39

37

20

25

30

35

40

45

50

55

60

65

70

75

32

33

31

30

Mark Time 4
Move 32
Hold 8

Director Viewpoint

move 24
hold 8
hold 32

Director Viewpoint

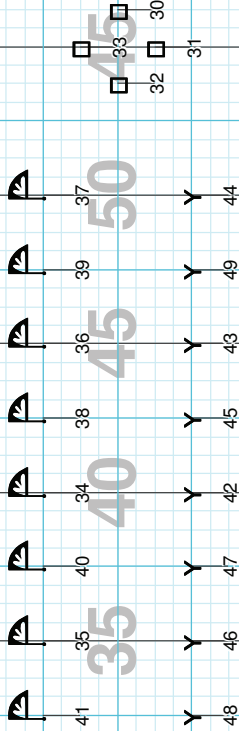
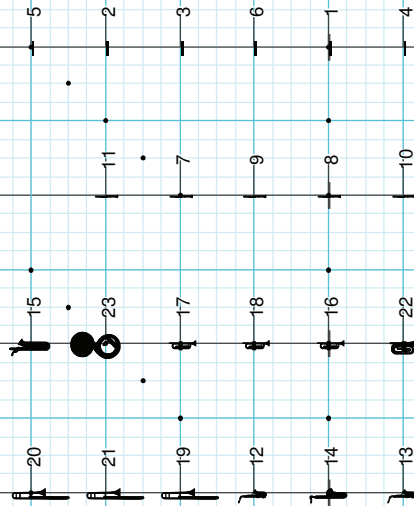
up tempo development
move 28
hold 4

Director Viewpoint

move 16



26 24 25 27 28 29



20 25 30 35 40 45 50 55 60 65 70 75 80 85 90 95 100 105 110 115 120 125 130 135 140 145 150 155 160

Director Viewpoint

The diagram is a large grid with 180 columns and 40 rows. It contains the following elements:

- Numbered Points:** Points 1 through 49 are scattered across the grid. Some are accompanied by symbols: hearts (e.g., 1, 2, 3, 4, 5, 6, 7, 8, 9, 10, 11, 12, 13, 14, 15, 16, 17, 18, 19, 20, 21, 22, 23, 24, 25, 26, 27, 28, 29, 30, 31, 32, 33, 34, 35, 36, 37, 38, 39, 40, 41, 42, 43, 44, 45, 46, 47, 48, 49), squares (e.g., 30, 31, 32, 33, 34, 35, 36, 37, 38, 39, 40, 41, 42, 43, 44, 45, 46, 47, 48, 49), and triangles (e.g., 34, 35, 36, 37, 38, 39, 40, 41, 42, 43, 44, 45, 46, 47, 48, 49).
- Box:** A white box in the top right corner contains the text "move 24 hold 8".
- Grid Lines:** Vertical lines are spaced every 10 units. Horizontal lines are spaced every 5 units.
- Section Dividers:** Vertical lines at columns 10, 20, 30, 40, 50, 60, 70, 80, 90, 100, 110, 120, 130, 140, 150, 160, 170, and 180. Horizontal lines at rows 5, 10, 15, 20, 25, 30, 35, and 40.
- Tick Marks:** Small vertical tick marks are present on the horizontal lines at rows 5, 10, 15, 20, 25, 30, 35, and 40.

Director Viewpoint

1 2 3 4 5 6 7 8 9 10 11 12 13 14 15 16 17 18 19 20 21 22 23 24 25 26 27 28 29 30 31 32 33 34 35 36 37 38 39 40 41 42 43 44 45 46 47 48 49 50

move 32

Director Viewpoint

Director Viewpoint

20 25 30 35 40 45 50 55 60 65 70 75 80 85 90 95 100 105 110 115 120 125 130 135 140 145 150 155 160 165 170 175 180 185 190 195 200

Director Viewpoint

move 24
hold 16
horns to box level on 1

Director Viewpoint

move 16
hold to end
horns to box center on 1

20 25 30 35 40 45 50 55 60 65 70 75

Director Viewpoint

Director Viewpoint